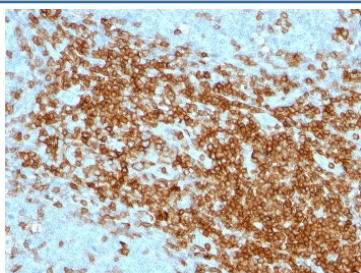


CD43 Antibody [clone SPN/1094] (V2874)

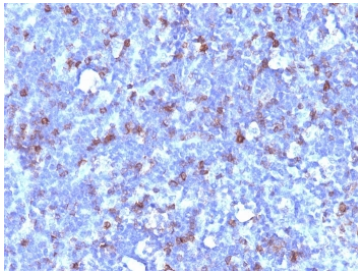
Catalog No.	Formulation	Size
V2874-100UG	0.2 mg/ml in 1X PBS with 0.1 mg/ml BSA (US sourced) and 0.05% sodium azide	100 ug
V2874-20UG	0.2 mg/ml in 1X PBS with 0.1 mg/ml BSA (US sourced) and 0.05% sodium azide	20 ug
V2874SAF-100UG	1 mg/ml in 1X PBS; BSA free, sodium azide free	100 ug
V2874IHC-7ML	Prediluted in 1X PBS with 0.1 mg/ml BSA (US sourced) and 0.05% sodium azide; *For IHC use only*	7 ml

[Bulk quote request](#)

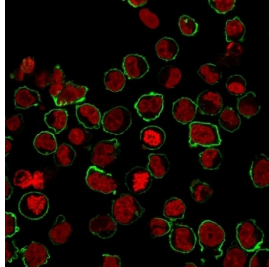
Availability	1-3 business days
Species Reactivity	Human
Format	Purified
Clonality	Monoclonal (mouse origin)
Isotype	Mouse IgG1, kappa
Clone Name	SPN/1094
Purity	Protein G affinity chromatography
UniProt	P16150
Localization	Cell surface
Applications	Western Blot : 1-2ug/10 ⁶ cells Immunofluorescence : 1-2ug/ml Immunohistochemistry (FFPE) : 1-2ug/ml for 30 min at RT
Limitations	This CD43 antibody is available for research use only.



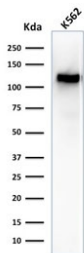
IHC: Formalin-fixed, paraffin-embedded human tonsil stained with CD43 antibody (clone SPN/1094).



IHC: Formalin-fixed, paraffin-embedded human lymphoma stained with CD43 antibody (clone SPN/1094).



Immunofluorescence staining of human K562 cells with CD43 antibody (clone SPN/1094, green) and NucSpot (red).



Western blot testing of human K562 cell lysate with CD43 antibody (clone SPN/1094). Predicted molecular weight 45-135 kDa depending on glycosylation level.

Description

It recognizes a cell surface glycoprotein of 95/115/135kDa (depending upon the extent of glycosylation), identified as CD43. 70-90% of T-cell lymphomas and from 22-37% of B-cell lymphomas express CD43. No reactivity has been observed with reactive B-cells. So a B-lineage population that co-expresses CD43 is highly likely to be a malignant lymphoma, especially a low-grade lymphoma, rather than a reactive B-cell population. When CD43 antibody is used in combination with anti-CD20, effective immunophenotyping of the lymphomas in formalin-fixed tissues can be obtained. Co-staining of a lymphoid infiltrate with anti-CD20 and anti-CD43 argues against a reactive process and favors a diagnosis of lymphoma.

Application Notes

Optimal dilution of the CD43 antibody should be determined by the researcher.

1. Staining of formalin-fixed tissues requires boiling tissue sections in pH 9 10mM Tris with 1mM EDTA for 10-20 min followed by cooling at RT for 20 min.
2. The prediluted format is supplied in a dropper bottle and is optimized for use in IHC. After epitope retrieval step (if required), drip mAb solution onto the tissue section and incubate at RT for 30 min.

Immunogen

Recombinant human protein was used as the immunogen for the CD43 antibody.

Storage

Store the CD43 antibody at 2-8°C (with azide) or aliquot and store at -20°C or colder (without azide).

