

CD43 Antibody [clone Bra7G] (V2873)

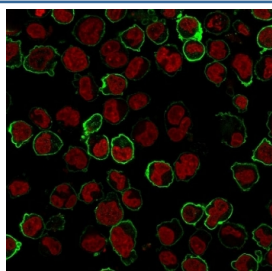
| Catalog No. | Formulation | Size |
|----------------|---|--------|
| V2873-100UG | 0.2 mg/ml in 1X PBS with 0.1 mg/ml BSA (US sourced) and 0.05% sodium azide | 100 ug |
| V2873-20UG | 0.2 mg/ml in 1X PBS with 0.1 mg/ml BSA (US sourced) and 0.05% sodium azide | 20 ug |
| V2873SAF-100UG | 1 mg/ml in 1X PBS; BSA free, sodium azide free | 100 ug |
| V2873IHC-7ML | Prediluted in 1X PBS with 0.1 mg/ml BSA (US sourced) and 0.05% sodium azide; *For IHC use only* | 7 ml |



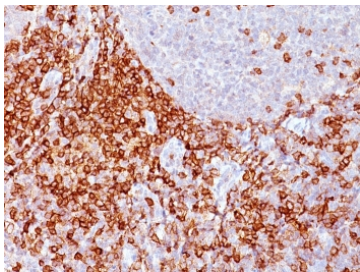
Citations (2)

[Bulk quote request](#)

| | |
|--------------------|--|
| Availability | 1-3 business days |
| Species Reactivity | Human |
| Format | Purified |
| Clonality | Monoclonal (mouse origin) |
| Isotype | Mouse IgM, kappa |
| Clone Name | Bra7G |
| Purity | PEG precipitation |
| UniProt | P16150 |
| Localization | Cell surface |
| Applications | Immunofluorescence : 1-2ug/ml Immunohistochemistry (FFPE) : 1-2ug/ml for 30 min at RT (1) (2) |
| Limitations | This CD43 antibody is available for research use only. |



Immunofluorescence staining of human K562 cells with CD43 antibody (green, clone Bra7G) and NucSpot (red).



IHC: Formalin-fixed, paraffin-embedded human spleen stained with CD43 antibody (clone Bra7G).

Description

One of the major glycoproteins of thymocytes and T lymphocytes. Plays a role in the physicochemical properties of the T-cell surface and in lectin binding. Presents carbohydrate ligands to selectins. Has an extended rodlike structure that could protrude above the glycocalyx of the cell and allow multiple glycan chains to be accessible for binding. Is a counter-receptor for SN/Siglec-1 (By similarity). During T-cell activation is actively removed from the T-cell-APC (antigen-presenting cell) contact site thus suggesting a negative regulatory role in adaptive immune response (By similarity). [UniProt]

Application Notes

Optimal dilution of the CD43 antibody should be determined by the researcher.

1. For staining of formalin-fixed tissues, digest sections with Trypsin at 1mg/ml PBS, 15 min at room temp
2. The prediluted format is supplied in a dropper bottle and is optimized for use in IHC. After epitope retrieval step (if required), drip mAb solution onto the tissue section and incubate at RT for 30 min.

Immunogen

Immature pluripotent human leukemia K562 cells were used as the immunogen for the CD43 antibody.

Storage

Store the CD43 antibody at 2-8°C (with azide) or aliquot and store at -20°C or colder (without azide).