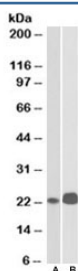


## CD3e Antibody (R35652)

Catalog No.	Formulation	Size
R35652-100UG	0.5 mg/ml in 1X TBS, pH7.3, with 0.5% BSA (US sourced) and 0.02% sodium azide	100 ug

[Bulk quote request](#)

Availability	1-3 business days
Species Reactivity	Human
Predicted Reactivity	Pig, Rat
Format	Antigen affinity purified
Clonality	Polyclonal (goat origin)
Isotype	Goat Ig
Purity	Antigen affinity
Gene ID	916
Applications	Western Blot : 0.1-0.3ug/ml ELISA (peptide) LOD : 1:128000
Limitations	This CD3e antibody is available for research use only.



Western blot testing of Jurkat [A] and Molt4 [B] lysates with CD3e antibody at 0.1ug/ml. Expected/observed molecular weight ~23kDa.

## Description

Additional name(s) for this target protein: CD3 epsilon

## Application Notes

Optimal dilution of the CD3e antibody should be determined by the researcher.

## Immunogen

Amino acids RKGQRDLYSGLNQR were used as the immunogen for this CD3e antibody. The amino acid sequence used

as immunogen is from the cytoplasmic portion of the protein.

## **Storage**

Aliquot and store the CD3e antibody at -20oC.