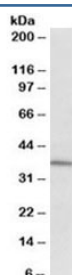


CD38 Antibody (R34031)

Catalog No.	Formulation	Size
R34031-100UG	0.5 mg/ml in 1X TBS, pH7.3, with 0.5% BSA (US sourced) and 0.02% sodium azide	100 ug

[Bulk quote request](#)

Availability	1-3 business days
Species Reactivity	Human
Format	Antigen affinity purified
Clonality	Polyclonal (goat origin)
Isotype	Goat Ig
Purity	Antigen affinity
Gene ID	952
Applications	Western Blot : 2-5ug/ml ELISA (peptide) LOD : 1:128000
Limitations	This CD38 antibody is available for research use only.



Western blot testing of human spinal cord cancer lysate with CD38 antibody at 2ug/ml.
Expected molecular weight: 34-46 kDa.

Description

Additional name(s) for this target protein: ADP-ribosyl cyclase 1

Application Notes

Optimal dilution of the CD38 antibody should be determined by the researcher.

Immunogen

Amino acids EVHNLQPEKVQT were used as the immunogen for this CD38 antibody.

Storage

Aliquot and store the CD38 antibody at -20oC.