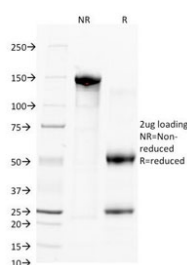


## CD38 Antibody [clone FS02] (V3008)

Catalog No.	Formulation	Size
V3008-100UG	0.2 mg/ml in 1X PBS with 0.1 mg/ml BSA (US sourced) and 0.05% sodium azide	100 ug
V3008-20UG	0.2 mg/ml in 1X PBS with 0.1 mg/ml BSA (US sourced) and 0.05% sodium azide	20 ug
V3008SAF-100UG	1 mg/ml in 1X PBS; BSA free, sodium azide free	100 ug

[Bulk quote request](#)

<b>Availability</b>	1-3 business days
<b>Species Reactivity</b>	Human
<b>Format</b>	Purified
<b>Clonality</b>	Monoclonal (mouse origin)
<b>Isotype</b>	Mouse IgG1, kappa
<b>Clone Name</b>	FS02
<b>Purity</b>	Protein G affinity chromatography
<b>UniProt</b>	P28907
<b>Localization</b>	Cell surface, cytoplasm and nucleus
<b>Applications</b>	Flow Cytometry : 0.5-1ug/10 <sup>6</sup> cells Immunofluorescence : 0.5-1ug/ml
<b>Limitations</b>	This CD38 antibody is available for research use only.



SDS-PAGE Analysis of Purified, BSA-Free CD38 Antibody (clone FS02). Confirmation of Integrity and Purity of the Antibody.

## Description

This antibody reacts with a type II membrane glycopeptide with a transmembrane sequence near the NH<sub>2</sub>-terminus.

CD38 is a type II transmembrane glycoprotein that is present on early B- and T-cell lineages and activated B- and T-cells but is absent from most mature resting peripheral lymphocytes. CD38 is also found on thymocytes, pre-B cells, germinal center B-cells, mitogen-activated T-cells, monocytes and Ig-secreting plasma cells. CD38 is expressed on CD34+ cells. The CD34+CD38- population of hematopoietic stems cells defines the most pluripotent cells (e.g. blast colony forming cells).

## **Application Notes**

Optimal dilution of the CD38 antibody should be determined by the researcher.

## **Immunogen**

Human CD38 was used as the immunogen for the CD38 antibody.

## **Storage**

Store the CD38 antibody at 2-8oC (with azide) or aliquot and store at -20oC or colder (without azide).