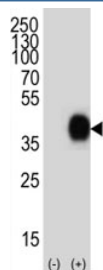


CD38 Antibody (F48288)

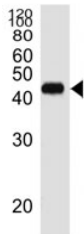
Catalog No.	Formulation	Size
F48288-0.4ML	In 1X PBS, pH 7.4, with 0.09% sodium azide	0.4 ml
F48288-0.08ML	In 1X PBS, pH 7.4, with 0.09% sodium azide	0.08 ml

[Bulk quote request](#)

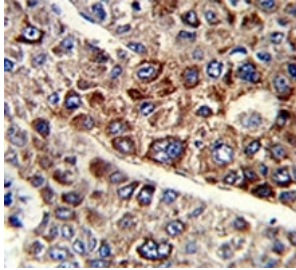
Availability	1-3 business days
Species Reactivity	Human
Predicted Reactivity	Primate
Format	Purified
Clonality	Polyclonal (rabbit origin)
Isotype	Rabbit Ig
Purity	Purified
UniProt	P28907
Applications	Western Blot : 1:1000-4000 IHC (Paraffin) : 1:50-1:100 Immunofluorescence : 1:10-1:50 Flow Cytometry : 1:10-1:50
Limitations	This CD38 antibody is available for research use only.



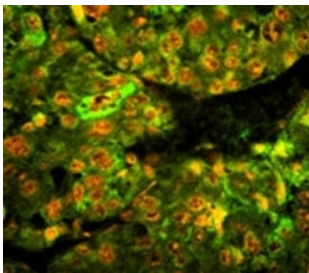
Western blot analysis of lysate from 293T cell line using CD38 antibody diluted at 1:1000.



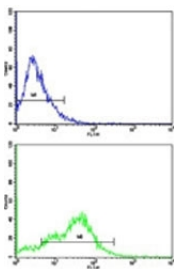
Western blot analysis of lysate from RPMI8226 cell line using CD38 antibody diluted at 1:1000.



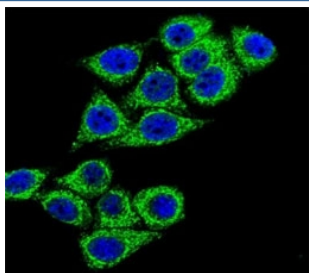
IHC analysis of FFPE human hepatocarcinoma with CD38 antibody



Immunofluorescence analysis of CD38 antibody with paraffin-embedded human hepatocarcinoma tissue. Primary Ab was followed by FITC-conjugated goat anti-rabbit IgG. FITC emits green fluorescence. Red counterstaining is PI.



Flow cytometric analysis of HepG2 cells using CD38 antibody (bottom histogram) compared to a negative control cell (top histogram). FITC-conjugated goat-anti-rabbit secondary Ab was used for the analysis.



Confocal immunofluorescent analysis of CD38 antibody with HeLa cells followed by Alexa Fluor 488-conjugated goat anti-rabbit IgG (green). DAPI was used as a nuclear counterstain (blue).

Description

CD38 is a novel multifunctional ectoenzyme widely expressed in cells and tissues especially in leukocytes. CD38 also functions in cell adhesion, signal transduction and calcium signaling.

Application Notes

Titration of the CD38 antibody may be required due to differences in protocols and secondary/substrate sensitivity.

Immunogen

A portion of amino acids 241-270 from the human protein was used as the immunogen for this CD38 antibody.

Storage

Aliquot the CD38 antibody and store frozen at -20oC or colder. Avoid repeated freeze-thaw cycles.