

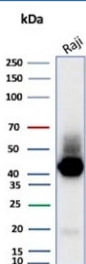
CD38 Antibody [clone CD38/8075R] (V5039)

Catalog No.	Formulation	Size
V5039-100UG	0.2 mg/ml in 1X PBS with 0.1 mg/ml BSA (US sourced), 0.05% sodium azide	100 ug
V5039-20UG	0.2 mg/ml in 1X PBS with 0.1 mg/ml BSA (US sourced), 0.05% sodium azide	20 ug
V5039SAF-100UG	1 mg/ml in 1X PBS; BSA free, sodium azide free	100 ug

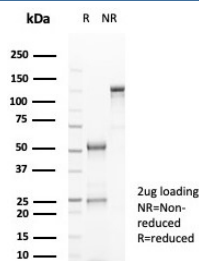
Recombinant **RABBIT MONOCLONAL**

[Bulk quote request](#)

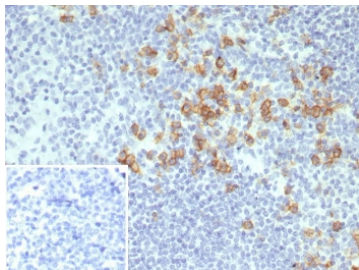
Availability	1-3 business days
Species Reactivity	Human
Format	Purified
Clonality	Recombinant Rabbit Monoclonal
Isotype	Rabbit IgG, kappa
Clone Name	CD38/8075R
Purity	Protein A/G affinity
UniProt	P28907
Localization	Cell Surface, Cytoplasm
Applications	Immunohistochemistry (FFPE) : 1-2ug/ml for 30 min at RT Western Blot : 2-4ug/ml
Limitations	This CD38 antibody is available for research use only.



Western blot testing of human Raji cell lysate with CD38 antibody (clone CD38/8075R).
Expected molecular weight: 34-46 kDa depending on glycosylation level.



SDS-PAGE analysis of purified, BSA-free CD38 antibody (clone CD38/8075R) as confirmation of integrity and purity.



IHC staining of FFPE human tonsil tissue with CD38 antibody (clone CD38/8075R). Inset: PBS used in place of primary Ab (secondary Ab negative control). HIER: boil tissue sections in pH 9 10mM Tris with 1mM EDTA for 20 min and allow to cool before testing.

Description

CD38 is a type II transmembrane glycoprotein that is present on early B- and T-cell lineages and activated B- and T-cells but is absent from most mature resting peripheral lymphocytes. CD38 is found on thymocytes, pre-B cells, germinal center B-cells, mitogen-activated T-cells, monocytes and Ig-secreting plasma cells. CD38 is expressed on CD34+ cells. The CD34+CD38- population of hematopoietic stem cells define the most pluripotent cells (e.g. blast colony forming cells).

Application Notes

Optimal dilution of the CD38 antibody should be determined by the researcher.

Immunogen

A recombinant partial protein sequence (within amino acids 200-300) from the human protein was used as the immunogen for the CD38 antibody.

Storage

Aliquot the CD38 antibody and store frozen at -20°C or colder. Avoid repeated freeze-thaw cycles.