

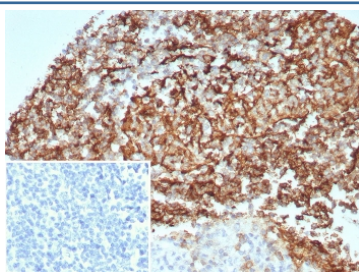
## CD35 Antibody / CR1 [clone CR1/8674R] (V4778)

Catalog No.	Formulation	Size
V4778-100UG	0.2 mg/ml in 1X PBS with 0.1 mg/ml BSA (US sourced), 0.05% sodium azide	100 ug
V4778-20UG	0.2 mg/ml in 1X PBS with 0.1 mg/ml BSA (US sourced), 0.05% sodium azide	20 ug
V4778SAF-100UG	1 mg/ml in 1X PBS; BSA free, sodium azide free	100 ug

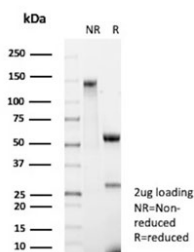
Recombinant **RABBIT MONOCLONAL**

[Bulk quote request](#)

<b>Availability</b>	1-3 business days
<b>Species Reactivity</b>	Human
<b>Format</b>	Purified
<b>Clonality</b>	Recombinant Rabbit Monoclonal
<b>Isotype</b>	Rabbit IgG, kappa
<b>Clone Name</b>	CR1/8674R
<b>Purity</b>	Protein A/G affinity
<b>UniProt</b>	P17927
<b>Localization</b>	Cell surface
<b>Applications</b>	Immunohistochemistry (FFPE) : 1-2ug/ml for 30 min at RT
<b>Limitations</b>	This CD35 antibody is available for research use only.



IHC staining of FFPE human kidney tissue with CD35 antibody (clone CD35/8674R) at 2ug/ml. Inset: PBS used in place of primary Ab (secondary Ab negative control). HIER: boil tissue sections in pH 9 10mM Tris with 1mM EDTA for 20 min and allow to cool before testing.



SDS-PAGE analysis of purified, BSA-free CD35 antibody (clone CR1/8674R) as confirmation of integrity and purity.

## Description

CD35, complement receptor 1, is a cell membrane-bound, monomeric glycoprotein on numerous cell types including erythrocytes, leukocytes, glomerular podocytes, and follicular dendritic cells. The primary function of CD35 is to serve as the cellular receptor for C3b and C4b, the most important components of the complement system leading to clearance of foreign macromolecules. CD35 antigen is found on erythrocytes, B cells, a subset of T cells, monocytes, as well as eosinophils, and neutrophils. Anti-CD35 is considered a mature B-cell marker which labels follicular dendritic reticulum cells and tumors derived from such cells such as follicular dendritic cell tumor/sarcoma.

## Application Notes

Optimal dilution of the CD35 antibody should be determined by the researcher.

## Immunogen

A recombinant partial protein sequence (within amino acids 600-900) from the human protein was used as the immunogen for the CD35 antibody.

## Storage

Aliquot the CD35 antibody and store frozen at -20°C or colder. Avoid repeated freeze-thaw cycles.