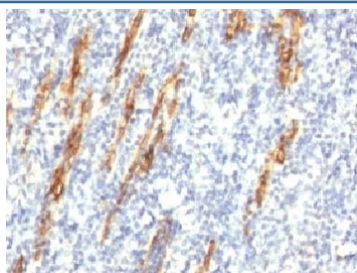


## CD34 Antibody Cocktail [clone QBEnd/10 + HPCA1/763] (V2999)

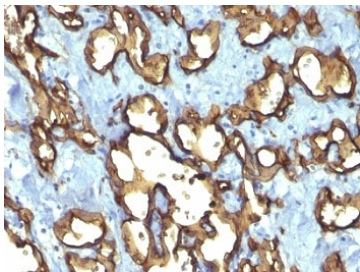
Catalog No.	Formulation	Size
V2999-100UG	0.2 mg/ml in 1X PBS with 0.1 mg/ml BSA (US sourced) and 0.05% sodium azide	100 ug
V2999-20UG	0.2 mg/ml in 1X PBS with 0.1 mg/ml BSA (US sourced) and 0.05% sodium azide	20 ug
V2999SAF-100UG	1 mg/ml in 1X PBS; BSA free, sodium azide free	100 ug
V2999IHC-7ML	Prediluted in 1X PBS with 0.1 mg/ml BSA (US sourced) and 0.05% sodium azide; *For IHC use only*	7 ml

**Bulk quote request**

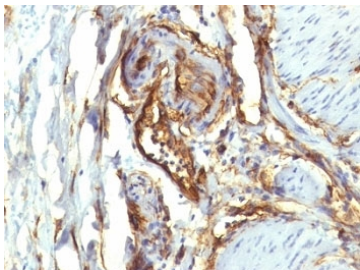
<b>Availability</b>	1-3 business days
<b>Species Reactivity</b>	Human
<b>Format</b>	Purified
<b>Clonality</b>	Monoclonal (mouse origin)
<b>Isotype</b>	Mouse IgG1, lambda
<b>Clone Name</b>	QBEnd/10 + HPCA1/763
<b>Purity</b>	Protein G affinity chromatography
<b>UniProt</b>	P28906
<b>Localization</b>	Cell surface
<b>Applications</b>	Flow Cytometry : 0.5-1ug/10 <sup>6</sup> cells Immunofluorescence : 0.5-1ug/ml Immunohistochemistry (FFPE) : 0.25-0.5ug/ml for 30 min at RT
<b>Limitations</b>	This CD34 antibody cocktail is available for research use only.



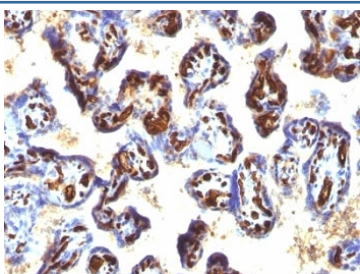
IHC: Formalin-fixed, paraffin-embedded human tonsil stained with CD34 antibody (QBEnd/10 + HPCA1/763)



IHC: Formalin-fixed, paraffin-embedded human angiosarcoma stained with CD34 antibody (QBEnd/10 + HPCA1/763)



IHC: Formalin-fixed, paraffin-embedded human colon carcinoma stained with CD34 antibody (QBEnd/10 + HPCA1/763)



IHC: Formalin-fixed, paraffin-embedded human placenta stained with CD34 antibody (QBEnd/10 + HPCA1/763)

## Description

This antibody recognizes a carbohydrate epitope on a single chain, transmembrane, heavily glycosylated protein of 90-120kDa, which is identified as CD34 (VI international workshop on human differentiation antigens). Its expression is a hallmark for identifying pluripotent hematopoietic stem or progenitor cells. Its expression is gradually lost as lineage committed progenitors differentiate. CD34 is a marker of choice for staining blasts in acute myeloid leukemia. In addition, it is expressed by soft tissue tumors, such as solitary fibrous tumor and gastrointestinal stromal tumor. CD34 expression is also found in vascular endothelium. Additionally, proliferating endothelial cells overexpress this molecule than the non-proliferating endothelial cells. Anti-CD34 labels > 85% of angiosarcoma and Kaposi s sarcoma, but shows low specificity.

## Application Notes

Optimal dilution of the CD34 antibody cocktail should be determined by the researcher.

1. Staining of formalin-fixed tissues is enhanced by boiling tissue sections in 10mM Citrate buffer, pH 6.0, for 10-20 min followed by cooling at RT for 20 min.
2. The prediluted format is supplied in a dropper bottle and is optimized for use in IHC. After epitope retrieval step (if required), drip mAb solution onto the tissue section and incubate at RT for 30 min.

## Immunogen

A detergent solubilized vesicular suspension prepared from human term placenta (QBEnd/10) and recombinant full-length human protein (HPCA1/763) were used as the immunogen for the CD34 antibody cocktail.

## Storage

Store the CD34 antibody cocktail at 2-8oC (with azide) or aliquot and store at -20oC or colder (without azide).

