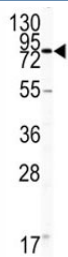


CD31 Antibody (F50436)

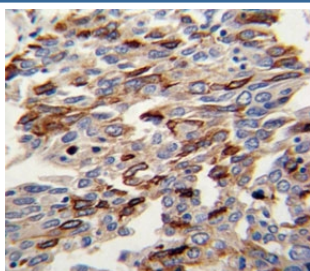
Catalog No.	Formulation	Size
F50436-0.4ML	In 1X PBS, pH 7.4, with 0.09% sodium azide	0.4 ml
F50436-0.08ML	In 1X PBS, pH 7.4, with 0.09% sodium azide	0.08 ml

Bulk quote request

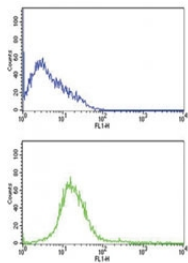
Availability	1-3 business days
Species Reactivity	Human
Format	Purified
Clonality	Polyclonal (rabbit origin)
Isotype	Rabbit Ig
Purity	Purified
UniProt	P16284
Applications	Western Blot : 1:1000 IHC (Paraffin) : 1:10-1:50 Flow Cytometry : 1:10-1:50
Limitations	This CD31 antibody is available for research use only.



Western blot analysis of CD31 antibody and HL-60 lysate.



IHC analysis of FFPE human lung carcinoma with CD31 antibody



CD31 antibody flow cytometric analysis of HL-60 cells (bottom histogram) compared to a negative control cell (top histogram). FITC-conjugated goat-anti-rabbit secondary Ab was used for the analysis.

Description

CD31 is a cell adhesion molecule expressed on platelets and at endothelial cell intercellular junctions.

Application Notes

Titration of the CD31 antibody may be required due to differences in protocols and secondary/substrate sensitivity.

Immunogen

A portion of amino acids 690-718 from the human protein was used as the immunogen for this CD31 antibody.

Storage

Aliquot the CD31 antibody and store frozen at -20oC or colder. Avoid repeated freeze-thaw cycles.