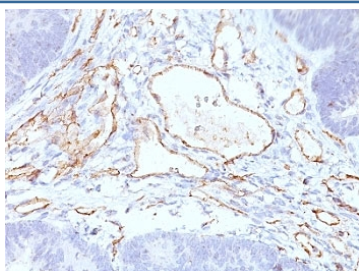


CD31 Antibody Cocktail [clone C31.3 + C31.7 + C31.10] (V2784)

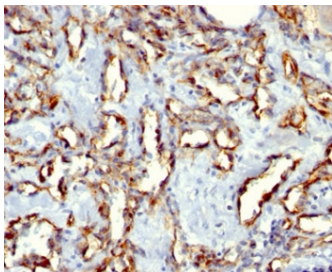
Catalog No.	Formulation	Size
V2784-100UG	0.2 mg/ml in 1X PBS with 0.1 mg/ml BSA (US sourced) and 0.05% sodium azide	100 ug
V2784-20UG	0.2 mg/ml in 1X PBS with 0.1 mg/ml BSA (US sourced) and 0.05% sodium azide	20 ug
V2784SAF-100UG	1 mg/ml in 1X PBS; BSA free, sodium azide free	100 ug
V2784IHC-7ML	Prediluted in 1X PBS with 0.1 mg/ml BSA (US sourced) and 0.05% sodium azide; *For IHC use only*	7 ml

Bulk quote request

Availability	1-3 business days
Species Reactivity	Human
Format	Purified
Clonality	Monoclonal (mouse origin)
Isotype	Mouse IgG1, kappa
Clone Name	C31.3 + C31.7 + C31.10
Purity	Protein G affinity chromatography
UniProt	P16284
Localization	Cell surface and cytoplasm of endothelial cells
Applications	Western Blot : 1-2ug/ml Immunohistochemistry (FFPE) : 1-2ug/ml for 30 min at RT
Limitations	This CD31 antibody cocktail is available for research use only.



IHC: Formalin-fixed, paraffin-embedded colon carcinoma stained with CD31 antibody cocktail (C31.3+C31.7+C31.10).



IHC: Formalin-fixed, paraffin-embedded human angiosarcoma stained with CD31 antibody cocktail (clones C31.3 + C31.7 + C31.10).



Western blot testing of human ThP1 cell lysate with CD31 antibody cocktail (clones C31.3 + C31.7 + C31.10). Expected molecular weight: 83-130 kDa depending on level of glycosylation.

Description

CD31 (PECAM-1) is a transmembrane glycoprotein member of the immunoglobulin supergene family of adhesion molecules. CD31 is expressed by stem cells of the hematopoietic system and is primarily used to identify and concentrate these cells for experimental studies as well as for bone marrow transplantation. Anti-CD31 has shown to be highly specific and sensitive for vascular endothelial cells. Staining of nonvascular tumors (excluding hematopoietic neoplasms) is rare. CD31 mAb reacts with normal, benign, and malignant endothelial cells which make up blood vessel lining. The level of CD31 expression can help to determine the degree of tumor angiogenesis, and a high level of CD31 expression may imply a rapidly growing tumor and potentially a predictor of tumor recurrence.

Application Notes

Optimal dilution of the CD31 antibody cocktail should be determined by the researcher.

1. Staining of formalin-fixed tissues requires boiling tissue sections in 10mM Tris with 1mM EDTA, pH 9.0, for 10-20 min followed by cooling at RT for 20 min
2. The prediluted format is supplied in a dropper bottle and is optimized for use in IHC. After epitope retrieval step (if required), drip mAb solution onto the tissue section and incubate at RT for 30 min.

Immunogen

Human recombinant protein was used as the immunogen for the CD31 antibody cocktail.

Storage

Store the CD31 antibody cocktail at 2-8°C (with azide) or aliquot and store at -20°C or colder (without azide).

