

## CD3 epsilon Antibody (R31519)

Catalog No.	Formulation	Size
R31519	0.5mg/ml if reconstituted with 0.2ml sterile DI water	100 ug

**Bulk quote request**

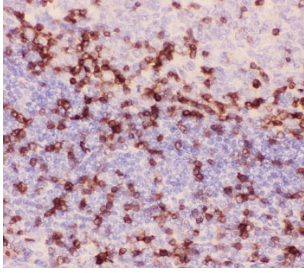
<b>Availability</b>	1-3 business days
<b>Species Reactivity</b>	Human, Mouse, Rat
<b>Format</b>	Antigen affinity purified
<b>Clonality</b>	Polyclonal (rabbit origin)
<b>Isotype</b>	Rabbit IgG
<b>Purity</b>	Antigen affinity
<b>Buffer</b>	Lyophilized from 1X PBS with 2.5% BSA and 0.025% sodium azide
<b>Gene ID</b>	916
<b>Applications</b>	Western Blot : 0.5-1ug/ml IHC (FFPE) : 0.5-1ug/ml IHC (Frozen) : 0.5-1ug/ml Immunocytochemistry : 0.5-1ug/ml Immunofluorescence : 1-2ug/ml
<b>Limitations</b>	This CD3 epsilon antibody is available for research use only.



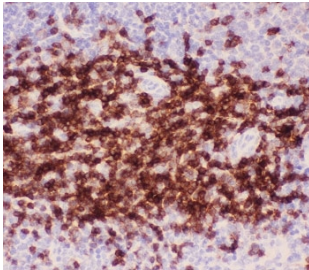
Western blot testing of CD3 epsilon antibody and Lane 1: Jurkat; 2: CEM lysate.  
Expected/observed molecular weight ~23 kDa.



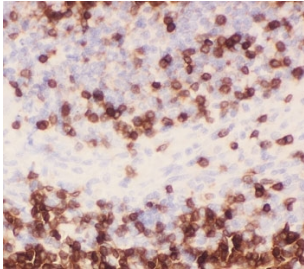
Western blot testing of CD3 epsilon antibody and recombinant human protein (0.5ng)



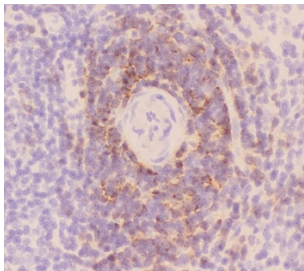
IHC-P: CD3 epsilon antibody testing of human tonsil tissue. Required HIER: steam section in pH6 citrate buffer for 20 min and allow to cool prior to testing.



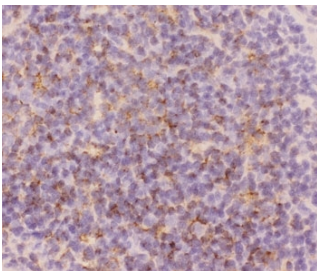
IHC-P: CD3 epsilon antibody testing of mouse spleen tissue. Required HIER: steam section in pH6 citrate buffer for 20 min and allow to cool prior to testing.



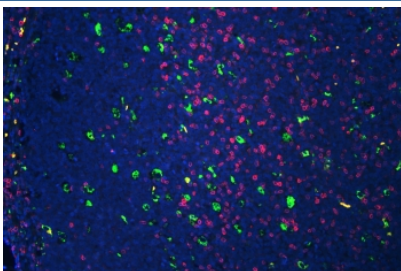
IHC-P staining of rat spleen tissue with CD3 epsilon antibody. Required HIER: steam section in pH6 citrate buffer for 20 min and allow to cool prior to testing.



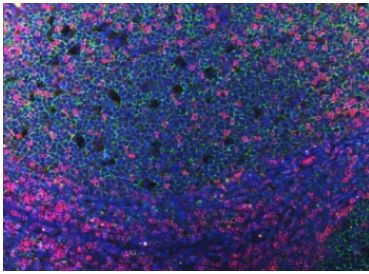
IHC-F staining of rat spleen tissue with CD3 epsilon antibody.



IHC-F staining of mouse spleen tissue with CD3 epsilon antibody.



Immunofluorescent staining of FFPE human tonsil tissue with CD3 epsilon antibody (pink) and CD68 mAb (green) at 1ug/ml, and DAPI nuclear stain (blue). HIER: steam section in pH6 citrate buffer for 20 min.



Immunofluorescent staining of FFPE human tonsil tissue with CD3 epsilon antibody (pink) and CD20 mAb (green) at 2ug/ml, and DAPI nuclear stain (blue). HIER: steam section in pH8 EDTA buffer for 20 min.

## Description

CD3 epsilon is a polypeptide which in humans is encoded by the CD3E gene which resides on chromosome 11. It is mapped to 11q23.3. Together with CD3gamma, -delta and -zeta, and the T-cell receptor alpha/beta and gamma/delta heterodimers, CD3e forms the T cell receptor-CD3 complex. This complex plays an important role in coupling antigen recognition to several intracellular signal-transduction pathways. The genes encoding the e, g and d polypeptides are located in the same cluster on chromosome 11. The e-polypeptide plays an essential role in T-cell development.

## Application Notes

The stated application concentrations are suggested starting amounts. Titration of the CD3 epsilon antibody may be required due to differences in protocols and secondary/substrate sensitivity.

## Immunogen

Human partial recombinant protein (AA 23-207) was used as the immunogen for this CD3 epsilon antibody.

## Storage

After reconstitution, the CD3 epsilon antibody can be stored for up to one month at 4oC. For long-term, aliquot and store at -20oC. Avoid repeated freezing and thawing.