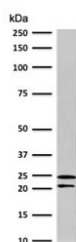


## CD3 epsilon Antibody [clone CDLA3e-1] (V3761)

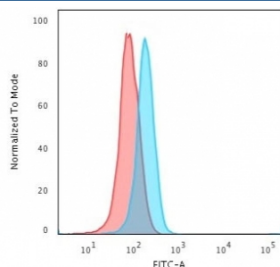
Catalog No.	Formulation	Size
V3761-100UG	0.2 mg/ml in 1X PBS with 0.1 mg/ml BSA (US sourced) and 0.05% sodium azide	100 ug
V3761-20UG	0.2 mg/ml in 1X PBS with 0.1 mg/ml BSA (US sourced) and 0.05% sodium azide	20 ug
V3761SAF-100UG	1 mg/ml in 1X PBS; BSA free, sodium azide free	100 ug

[Bulk quote request](#)

<b>Availability</b>	1-3 business days
<b>Species Reactivity</b>	Human
<b>Format</b>	Purified
<b>Clonality</b>	Monoclonal (mouse origin)
<b>Isotype</b>	Mouse IgG1, kappa
<b>Clone Name</b>	CDLA3e-1
<b>Purity</b>	Protein G affinity chromatography
<b>UniProt</b>	P07766
<b>Localization</b>	Cell surface and cytoplasmic
<b>Applications</b>	Flow Cytometry : 1-2ug/10 <sup>6</sup> cells Western Blot : 1-2ug/ml
<b>Limitations</b>	This CD3 epsilon antibody is available for research use only.



Western blot testing of human Jurkat cells with CD3e antibody (clone CDLA3e-1).  
Expected molecular weight ~23 kDa.



Flow cytometry testing of human Jurkat cells with CD3e antibody (clone CDLA3e-1); Red=isotype control, Blue= CD3e antibody.

## Description

This antibody recognizes the epsilon chain of CD3, which consists of five different polypeptide chains (designated as gamma, delta, epsilon, zeta, and eta) with MW ranging from 16-28kDa. The CD3 complex is closely associated at the lymphocyte cell surface with the T cell antigen receptor (TCR). Reportedly, CD3 complex is involved in signal transduction to the T cell interior following antigen recognition. The CD3 antigen is first detectable in early thymocytes and probably represents one of the earliest signs of commitment to the T cell lineage. In cortical thymocytes, CD3 is predominantly intracytoplasmic. However, in medullary thymocytes, it appears on the T cell surface. CD3 antigen is a highly specific marker for T cells, and is present in majority of T cell neoplasms.

## Application Notes

The stated application concentrations are suggested starting points. Titration of the CD3 epsilon antibody may be required due to differences in protocols and secondary/substrate sensitivity.

## Immunogen

A portion of amino acids 23-119 were used as the immunogen for the CD3 epsilon antibody.

## Storage

Store the CD3 epsilon antibody at 2-8oC (with azide) or aliquot and store at -20oC or colder (without azide).