

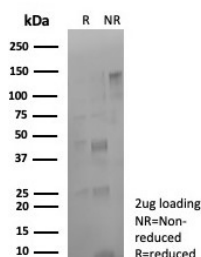
CD274 Antibody / PD-L1 / B7-H1 [clone rPDL1/8825] (V5285)

| Catalog No. | Formulation | Size |
|----------------|---|--------|
| V5285-100UG | 0.2 mg/ml in 1X PBS with 0.1 mg/ml BSA (US sourced), 0.05% sodium azide | 100 ug |
| V5285-20UG | 0.2 mg/ml in 1X PBS with 0.1 mg/ml BSA (US sourced), 0.05% sodium azide | 20 ug |
| V5285SAF-100UG | 1 mg/ml in 1X PBS; BSA free, sodium azide free | 100 ug |

Recombinant **MOUSE MONOCLONAL**

[Bulk quote request](#)

| | |
|---------------------------|---|
| Availability | 1-3 business days |
| Species Reactivity | Human |
| Format | Purified |
| Clonality | Recombinant Mouse Monoclonal |
| Isotype | Mouse IgG1, kappa |
| Clone Name | rPDL1/8825 |
| Purity | Protein A/G affinity |
| UniProt | Q9NZQ7 |
| Localization | Cell Surface, Cytoplasm |
| Applications | Immunohistochemistry (FFPE) : 1-2ug/ml for 30 min at RT |
| Limitations | This CD274 antibody is available for research use only. |



SDS-PAGE analysis of purified, BSA-free CD274 antibody (clone rPDL1/8825) as confirmation of integrity and purity.

Description

PD-L1/CD274 is a checkpoint regulator in immune cells, it is expressed on immune or non-hematopoietic cells. Expression of the protein is seen during pregnancy where it has a role in suppressing the immune system. PD-L1 induces an inhibitory signal in activated T-cells and promotes T-cell apoptosis. It is overexpressed in a number of different cancers where it is believed to play a significant role in the cancer's ability to evade the immune system.

Application Notes

Optimal dilution of the CD274 antibody should be determined by the researcher.

Immunogen

A recombinant partial protein sequence (within amino acids 190-290) from the human protein was used as the immunogen for the CD274 antibody.

Storage

Aliquot the CD274 antibody and store frozen at -20oC or colder. Avoid repeated freeze-thaw cycles.