

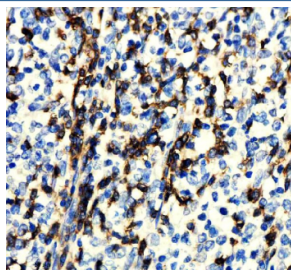
## CD247 Antibody / CD3 zeta [clone IHI-3] (RQ8903)

Catalog No.	Formulation	Size
RQ8903	Antibody in PBS with 0.02% sodium azide, 50% glycerol and 0.4-0.5mg/ml BSA	100 ul

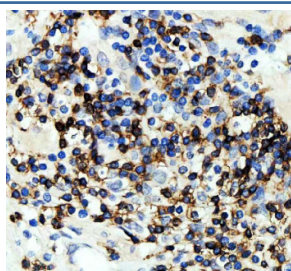
Recombinant **RABBIT MONOCLONAL**

[Bulk quote request](#)

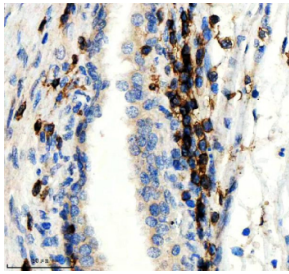
Availability	1-3 days
Species Reactivity	Human
Format	Purified
Clonality	Recombinant Rabbit Monoclonal
Isotype	Rabbit IgG
Clone Name	IHI-3
Purity	Affinity chromatography
UniProt	P20963
Localization	Cell membrane
Applications	Western Blot : 1:1000 Immunohistochemistry (FFPE) : 1:50
Limitations	This CD247 antibody is available for research use only.



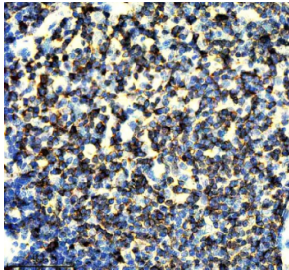
IHC staining of FFPE human lymphoma tissue with CD247 antibody, HRP-secondary and DAB substrate. HIER: boil tissue sections in pH8 EDTA for 20 min and allow to cool before testing.



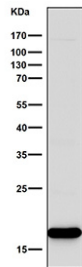
IHC staining of FFPE human prostate cancer tissue with CD247 antibody, HRP-secondary and DAB substrate. HIER: boil tissue sections in pH8 EDTA for 20 min and allow to cool before testing.



IHC staining of FFPE human prostate cancer tissue with CD247 antibody, HRP-secondary and DAB substrate. HIER: boil tissue sections in pH8 EDTA for 20 min and allow to cool before testing.



IHC staining of FFPE rat thymus tissue with CD247 antibody, HRP-secondary and DAB substrate. HIER: boil tissue sections in pH8 EDTA for 20 min and allow to cool before testing.



Western blot testing of human Jurkat cell lysate with CD247 antibody. Predicted molecular weight ~19 kDa but may be observed at higher molecular weights due to glycosylation.