

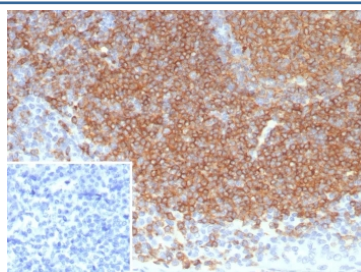
## CD22 Antibody / BL-CAM [clone BLCAM/8113R] (V4621)

Catalog No.	Formulation	Size
V4621-100UG	0.2 mg/ml in 1X PBS with 0.1 mg/ml BSA (US sourced), 0.05% sodium azide	100 ug
V4621-20UG	0.2 mg/ml in 1X PBS with 0.1 mg/ml BSA (US sourced), 0.05% sodium azide	20 ug
V4621SAF-100UG	1 mg/ml in 1X PBS; BSA free, sodium azide free	100 ug

Recombinant **RABBIT MONOCLONAL**

[Bulk quote request](#)

Availability	1-3 business days
Species Reactivity	Human
Format	Purified
Clonality	Recombinant Rabbit Monoclonal
Isotype	Rabbit IgG, kappa
Clone Name	BLCAM/8113R
Purity	Protein A/G affinity
UniProt	P20273
Localization	Cell surface
Applications	Immunohistochemistry (FFPE) : 1-2ug/ml for 30 min at RT
Limitations	This CD22 antibody is available for research use only.



IHC staining of FFPE human tonsil tissue with CD22 antibody (clone BLCAM/8113R).  
Inset: PBS instead of primary antibody, secondary control.

### Description

Recognizes a protein of 130-140kDa, identified as CD22 (also known as BL-CAM). CD22 expression is restricted to normal and neoplastic B cells and is absent from other haemopoietic cell types. In B-cell ontogeny, CD22 is first expressed in the cytoplasm of pro-B and pre-B cells, and on the surface as B cells mature to become IgD+. It is not expressed by plasma cells, CD22 is found highly expressed in follicular mantle and marginal zone B-cells, and while

germinal center B-cells are relatively weak. CD22 is a member of the immunoglobulin superfamily and serves as an adhesion receptor for sialic acid-bearing ligands expressed on erythrocytes and all leukocyte classes. It also associates with tyrosine kinases and play a role in signal transduction and B-cell activation.

## **Application Notes**

Optimal dilution of the CD22 antibody should be determined by the researcher.

## **Immunogen**

A recombinant partial protein sequence (within amino acids 1-200) from the human protein was used as the immunogen for the CD22 antibody.

## **Storage**

Aliquot the CD22 antibody and store frozen at -20oC or colder. Avoid repeated freeze-thaw cycles.