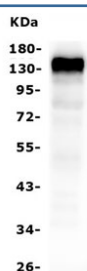


CD22 Antibody [clone 5E7.] (RQ5551)

Catalog No.	Formulation	Size
RQ5551	0.5mg/ml if reconstituted with 0.2ml sterile DI water	100 ug

Bulk quote request

Availability	1-3 business days
Species Reactivity	Human
Format	Antigen affinity purified
Clonality	Monoclonal (mouse origin)
Isotype	Mouse IgG2b
Clone Name	5E7.
Purity	Affinity purified
Buffer	Lyophilized from 1X PBS with 2% Trehalose and 0.025% sodium azide
UniProt	P20273
Applications	Western Blot : 0.5-1ug/ml
Limitations	This CD22 antibody is available for research use only.



Western blot testing of human Raji cell lysate with CD22 antibody. Expected molecular weight: 76-150 kDa depending on glycosylation level.

Description

CD22 is a surface glycoprotein of B lymphocytes that is rapidly phosphorylated on cytoplasmic tyrosines after antigen receptor cross-linking. It is a negative regulator of antigen receptor signaling whose onset of expression at the mature B cell stage may serve to raise the antigen concentration threshold required for B cell triggering. The human CD22 gene is expressed specifically in B lymphocytes and likely has an important function in cell-cell interactions. The B cell coreceptor CD22 plays an important role in regulating signal transduction via the B cell Ag receptor. And CD22 is located within the band region q13.1 of chromosome 19.

Application Notes

Optimal dilution of the CD22 antibody should be determined by the researcher.

Immunogen

Amino acids LAILILAICGLKLQRRWKRTQSQQGLQEN were used as the immunogen for the CD22 antibody.

Storage

After reconstitution, the CD22 antibody can be stored for up to one month at 4oC. For long-term, aliquot and store at -20oC. Avoid repeated freezing and thawing.