

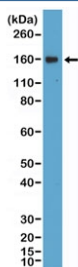
CD21 Antibody [clone RM372] (R20391)

Catalog No.	Formulation	Size
R20391-0.1ML	Antibody in PBS with 50% glycerol, 1% BSA and 0.09% sodium azide	100 ul

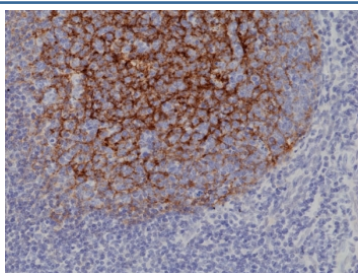
Recombinant **RABBIT MONOCLONAL**

[Bulk quote request](#)

Availability	1-3 business days
Species Reactivity	Human
Format	Purified
Clonality	Recombinant Rabbit Monoclonal
Isotype	Rabbit IgG
Clone Name	RM372
Purity	Protein A purified from animal origin-free supernatant
UniProt	P20023
Localization	Cell surface
Applications	Immunohistochemistry (FFPE) : 1:500-1:1000 Western Blot : 1:200-1:1000
Limitations	This recombinant CD21 antibody is available for research use only.



Western blot testing of human Daudi cell lysate with recombinant CD21 antibody at 1:400 dilution. Predicted molecular weight ~113 kDa but may be observed at higher molecular weights due to glycosylation.



IHC staining of FFPE human tonsil tissue with recombinant CD21 antibody at 1:1000.

Description

This antibody reacts to human CD21 (Complement receptor type 2).

Application Notes

The stated application concentrations are suggested starting points. Titration of the recombinant CD21 antibody may be required due to differences in protocols and secondary/substrate sensitivity.

Immunogen

A peptide corresponding to the C-terminus of human CD21 (Complement receptor type 2) was used as the immunogen for the recombinant CD21 antibody.

Storage

Store the recombinant CD21 antibody at -20oC.