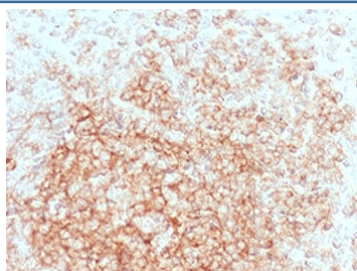


## CD21 Antibody [clone CDLA21-1] (V3779)

Catalog No.	Formulation	Size
V3779-100UG	0.2 mg/ml in 1X PBS with 0.1 mg/ml BSA (US sourced) and 0.05% sodium azide	100 ug
V3779-20UG	0.2 mg/ml in 1X PBS with 0.1 mg/ml BSA (US sourced) and 0.05% sodium azide	20 ug
V3779SAF-100UG	1 mg/ml in 1X PBS; BSA free, sodium azide free	100 ug

[Bulk quote request](#)

<b>Availability</b>	1-3 business days
<b>Species Reactivity</b>	Human
<b>Format</b>	Purified
<b>Clonality</b>	Monoclonal (mouse origin)
<b>Isotype</b>	Mouse IgG1, kappa
<b>Clone Name</b>	CDLA21-1
<b>Purity</b>	Protein G affinity chromatography
<b>UniProt</b>	P20023
<b>Localization</b>	Cell surface
<b>Applications</b>	Immunohistochemistry (FFPE) : 1-2ug/ml for 30 minutes at RT
<b>Limitations</b>	This CD21 antibody is available for research use only.



IHC testing of FFPE human tonsil tissue with CD21 antibody (clone CDLA21-1). HIER: boil tissue sections in pH6, 10mM citrate buffer, for 10-20 min followed by cooling at RT for 20 min.

## Description

CD21/CR2 is expressed strongly on mature B cells, follicular dendritic cells and weakly on immature thymocytes and T lymphocytes. In B-cell ontogeny, CD21 appears after the pre-B-stage, is maintained during peripheral B-cell development

and is lost upon terminal differentiation into plasma cells. This mAb is highly specific to CR2 and shows no cross-reaction with CR1.

## **Application Notes**

The stated application concentrations are suggested starting points. Titration of the CD21 antibody may be required due to differences in protocols and secondary/substrate sensitivity.

## **Immunogen**

A portion of amino acids 44-196 were used as the immunogen for the CD21 antibody.

## **Storage**

Store the CD21 antibody at 2-8oC (with azide) or aliquot and store at -20oC or colder (without azide).