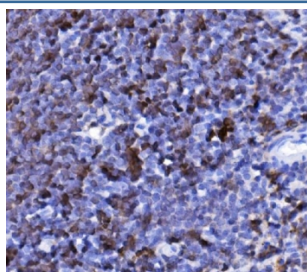


Cd20 Antibody (RQ6329)

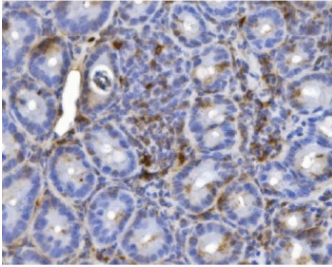
Catalog No.	Formulation	Size
RQ6329	0.5mg/ml if reconstituted with 0.2ml sterile DI water	100 ug

Bulk quote request

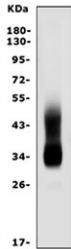
Availability	1-3 business days
Species Reactivity	Mouse
Format	Purified
Clonality	Polyclonal (rabbit origin)
Isotype	Rabbit IgG
Purity	Antigen affinity purified
Buffer	Lyophilized from 1X PBS with 2% Trehalose
UniProt	P11836
Localization	Cell surface, cytoplasmic
Applications	Western Blot : 0.5-1ug/ml Immunohistochemistry (FFPE) : 2-5ug/ml Flow Cytometry : 1-3ug/million cells Direct ELISA : 0.1-0.5ug/ml
Limitations	This Cd20 antibody is available for research use only.



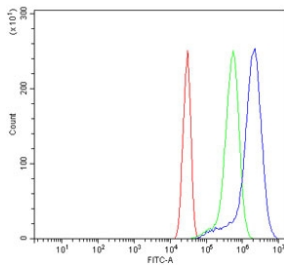
IHC staining of FFPE mouse spleen tissue with Cd20 antibody. HIER: boil tissue sections in pH8 EDTA for 20 min and allow to cool before testing.



IHC staining of FFPE mouse intestinal tissue with Cd20 antibody. HIER: boil tissue sections in pH8 EDTA for 20 min and allow to cool before testing.



Western blot testing of mouse spleen tissue lysate with Cd20 antibody. Expected molecular weight ~33 kDa but may be observed at up to ~50 kDa due to glycosylation.



Flow cytometry testing of mouse HEPA1-6 cells with Cd20 antibody at 1 ug/million cells (blocked with goat sera); Red=cells alone, Green=isotype control, Blue= Cd20 antibody.

Description

CD20, also known as MS4A1, is an activated-glycosylated phosphoprotein expressed on the surface of all B-cells beginning at the pro-B phase (CD45R+, CD117+) and progressively increasing in concentration until maturity. It is mapped to 11q12.2. This gene encodes a member of the membrane-spanning 4A gene family. The function of CD20 is to enable optimal B-cell immune response, specifically against T-independent antigens. It is suspected that CD20 acts as a calcium channel in the cell membrane. What's more, this protein may be involved in the regulation of B-cell activation and proliferation.

Application Notes

Optimal dilution of the Cd20 antibody should be determined by the researcher.

Immunogen

Recombinant mouse protein (amino acids M1-P291) was used as the immunogen for the Cd20 antibody.

Storage

After reconstitution, the Cd20 antibody can be stored for up to one month at 4°C. For long-term, aliquot and store at -20°C. Avoid repeated freezing and thawing.

