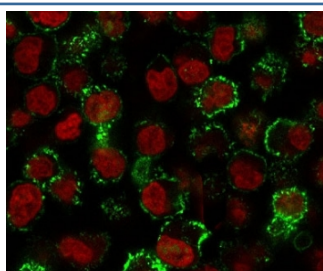


CD20 Antibody [clone CDLA20-1] (V7096)

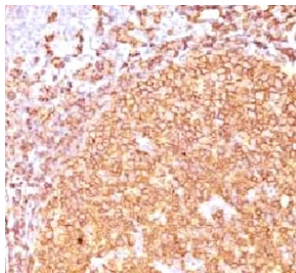
| Catalog No. | Formulation | Size |
|----------------|---|--------|
| V7096-100UG | 0.2 mg/ml in 1X PBS with 0.1 mg/ml BSA (US sourced) and 0.05% sodium azide | 100 ug |
| V7096-20UG | 0.2 mg/ml in 1X PBS with 0.1 mg/ml BSA (US sourced) and 0.05% sodium azide | 20 ug |
| V7096SAF-100UG | 1 mg/ml in 1X PBS; BSA free, sodium azide free | 100 ug |
| V7096IHC-7ML | Prediluted in 1X PBS with 0.1 mg/ml BSA (US sourced) and 0.05% sodium azide; *For IHC use only* | 7 ml |

[Bulk quote request](#)

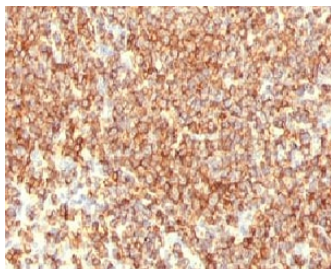
| | |
|---------------------------|--|
| Species Reactivity | Human |
| Format | Purified |
| Clonality | Monoclonal (mouse origin) |
| Isotype | Mouse IgG2a, kappa |
| Clone Name | CDLA20-1 |
| Purity | Protein G affinity chromatography |
| Buffer | 1X PBS, pH 7.4 |
| UniProt | P11836 |
| Localization | Predominantly cell surface with some cytoplasmic |
| Applications | Flow Cytometry : 0.5-1ug/million cells Immunofluorescence : 0.5-1ug/ml Immunohistochemistry (FFPE) : 0.5-1ug/ml for 30 min at RT Prediluted IHC Only Format : incubate for 30 min at RT (1) |
| Limitations | This CD20 antibody is available for research use only. |



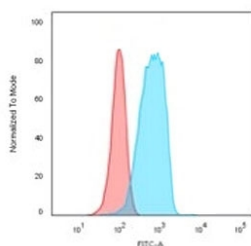
Immunofluorescent staining of human Raji cells with CD20 antibody (clone CDLA20-1, green) and Reddot nuclear stain (red).



IHC staining of FFPE human tonsil tissue with CD20 antibody (clone CDLA20-1). HIER: boil tissue sections in pH6, 10mM citrate buffer, for 10-20 min and allow to cool before testing.



IHC staining of FFPE human lymphoma tissue with CD20 antibody (clone CDLA20-1). HIER: boil tissue sections in pH6, 10mM citrate buffer, for 10-20 min and allow to cool before testing.



Flow cytometry testing of human Raji cells with CD20 antibody (clone CDLA20-1); Red=isotype control, Blue= CD20 antibody.

Description

CD20 is a non-Ig differentiation antigen of B-cells and its expression is restricted to normal and neoplastic B-cells, being absent from all other leukocytes and tissues. It is expressed by pre B-cells and persists during all stages of maturation but is lost upon terminal differentiation into plasma cells. The protein passes through the membrane 4 times with both ends in cytoplasm and exposes one short and one longer loop to the external environment. It acts as a calcium channel involved in B-cell activation and cell cycle progression.

Application Notes

Titration of the CD20 antibody may be required for optimal performance.

1. The prediluted format is supplied in a dropper bottle and is optimized for use in IHC. After epitope retrieval step (if required), drip mAb solution onto the tissue section and incubate at RT for 30 min.

Immunogen

Recombinant CD20 protein was used as the immunogen for this CD20 antibody. The epitope is known to be extracellular.

Storage

CD20 antibody with azide can be stored at 2-8°C. The azide-free format should be aliquoted and stored at -20°C or colder.

