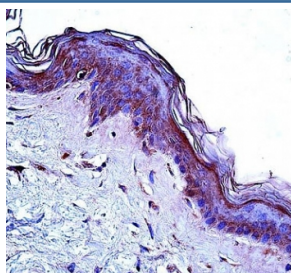


## CD1a Antibody (F43045)

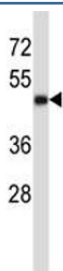
Catalog No.	Formulation	Size
F43045-0.4ML	In 1X PBS, pH 7.4, with 0.09% sodium azide	0.4 ml
F43045-0.08ML	In 1X PBS, pH 7.4, with 0.09% sodium azide	0.08 ml

**Bulk quote request**

<b>Availability</b>	1-3 business days
<b>Species Reactivity</b>	Human
<b>Format</b>	Antigen affinity purified
<b>Clonality</b>	Polyclonal (rabbit origin)
<b>Isotype</b>	Rabbit Ig
<b>Purity</b>	Antigen affinity
<b>UniProt</b>	P06126
<b>Applications</b>	Western Blot : 1:1000 IHC (Paraffin) : 1:10-1:50
<b>Limitations</b>	This CD1a antibody is available for research use only.



CD1a antibody immunohistochemistry analysis in formalin fixed and paraffin embedded human skin tissue.



CD1a antibody western blot analysis in MDA-MB231 lysate. Predicted molecular weight: 37~49 kDa.

## Description

This gene encodes a member of the CD1 family of transmembrane glycoproteins, which are structurally related to the major histocompatibility complex (MHC) proteins and form heterodimers with beta-2-microglobulin. The CD1 proteins mediate the presentation of primarily lipid and glycolipid antigens of self or microbial origin to T cells. The human genome contains five CD1 family genes organized in a cluster on chromosome 1. The CD1 family members are thought to differ in their cellular localization and specificity for particular lipid ligands. The protein encoded by this gene localizes to the plasma membrane and to recycling vesicles of the early endocytic system. Alternatively spliced transcript variants have been observed, but their biological validity has not been determined.

## Application Notes

Titration of the CD1a antibody may be required due to differences in protocols and secondary/substrate sensitivity.

## Immunogen

A portion of amino acids 75-104 from the human protein was used as the immunogen for this CD1a antibody.

## Storage

Aliquot the CD1a antibody and store frozen at -20oC or colder. Avoid repeated freeze-thaw cycles.