

CD1a Antibody [clone 66IIC7] (V2948)

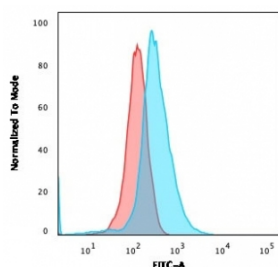
Catalog No.	Formulation	Size
V2948-100UG	0.2 mg/ml in 1X PBS with 0.1 mg/ml BSA (US sourced) and 0.05% sodium azide	100 ug
V2948-20UG	0.2 mg/ml in 1X PBS with 0.1 mg/ml BSA (US sourced) and 0.05% sodium azide	20 ug
V2948SAF-100UG	1 mg/ml in 1X PBS; BSA free, sodium azide free	100 ug



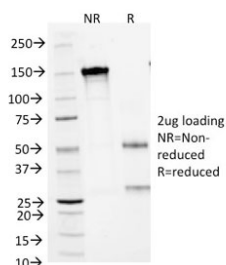
Citations (5)

[Bulk quote request](#)

Availability	1-3 business days
Species Reactivity	Human
Format	Purified
Clonality	Monoclonal (mouse origin)
Isotype	Mouse IgG2a, kappa
Clone Name	66IIC7
Purity	Protein G affinity chromatography
UniProt	P06126
Localization	Cell surface, cytoplasmic
Applications	Flow Cytometry : 1-2ug/million cells Immunofluorescence : 1-2ug/ml
Limitations	This CD1a antibody is available for research use only.



Flow cytometry testing of human Molt-4 cells with CD1a antibody (clone 66IIC7); Red=isotype control, Blue= CD1a antibody.



SDS-PAGE Analysis of Purified, BSA-Free CD1a Antibody (clone 66IIC7). Confirmation of Integrity and Purity of the Antibody.

Description

At least five CD1 genes (CD1a, b, c, d, and e) are identified. CD1 proteins have been demonstrated to restrict T cell response to non-peptide lipid and glycolipid antigens and play a role in non-classical antigen presentation. CD1a is a non-polymorphic MHC Class 1 related cell surface glycoprotein, expressed in association with Beta-2 microglobulin. Anti-CD1a labels Langerhans cell histiocytosis (Histiocytosis X), extranodal histiocytic sarcoma, a subset of T-lymphoblastic lymphoma/leukemia, and interdigitating dendritic cell sarcoma of the lymph node. When combined with antibodies against TTF-1 and CD5, anti-CD1a is useful in distinguishing between pulmonary and thymic neoplasms since CD1a is consistently expressed in thymic lymphocytes in both typical and atypical thymomas, but only focally in 1/6 of thymic carcinomas and not in lymphocytes in pulmonary neoplasms. Anti-CD1a is reported to be a new marker for perivascular epithelial cell tumor (PEComa).

Application Notes

Optimal dilution of the CD1a antibody should be determined by the researcher.

1. Staining of formalin-fixed tissues requires boiling tissue sections in 10mM Citrate buffer, pH 6.0, for 10-20 min followed by cooling at RT for 20 min.

Immunogen

Human thymocytes were used as the immunogen for the CD1a antibody.

Storage

Store the CD1a antibody at 2-8°C (with azide) or aliquot and store at -20°C or colder (without azide).