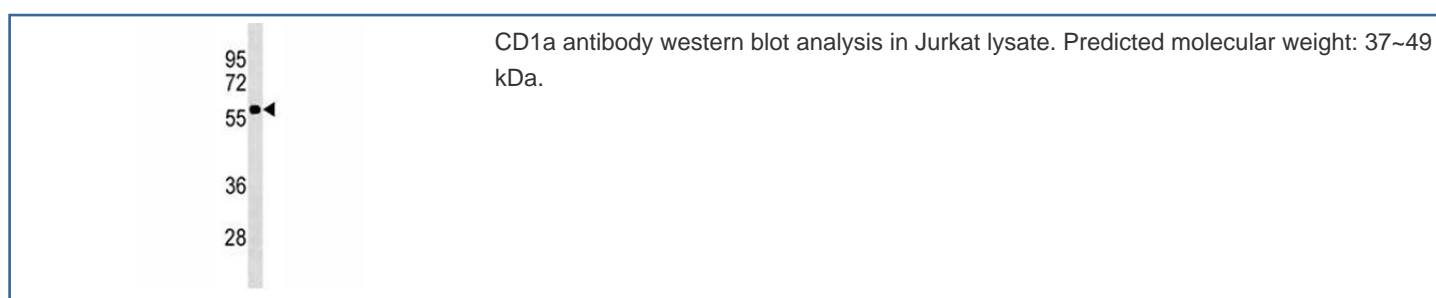


CD1a Antibody [clone 437CT28.2.1] (F53637)

Catalog No.	Formulation	Size
F53637-0.1ML	In ascites with 0.09% sodium azide	0.1 ml

Bulk quote request

Availability	1-3 business days
Species Reactivity	Human
Format	Ascites
Clonality	Monoclonal (mouse origin)
Isotype	Mouse IgG1
Clone Name	437CT28.2.1
Purity	Ascites
UniProt	P06126
Applications	Western Blot : 1:500-1:8000
Limitations	This CD1a antibody is available for research use only.



Description

This gene encodes a member of the CD1 family of transmembrane glycoproteins, which are structurally related to the major histocompatibility complex (MHC) proteins and form heterodimers with beta-2-microglobulin. The CD1 proteins mediate the presentation of primarily lipid and glycolipid antigens of self or microbial origin to T cells. The human genome contains five CD1 family genes organized in a cluster on chromosome 1. The CD1 family members are thought to differ in their cellular localization and specificity for particular lipid ligands. The protein encoded by this gene localizes to the plasma membrane and to recycling vesicles of the early endocytic system. Alternatively spliced transcript variants have been observed, but their biological validity has not been determined.

Application Notes

Titration of the CD1a antibody may be required due to differences in protocols and secondary/substrate sensitivity.

Immunogen

A portion of amino acids 76-104 from the human protein was used as the immunogen for this CD1a antibody.

Storage

Aliquot the CD1a antibody and store frozen at -20oC or colder. Avoid repeated freeze-thaw cycles.