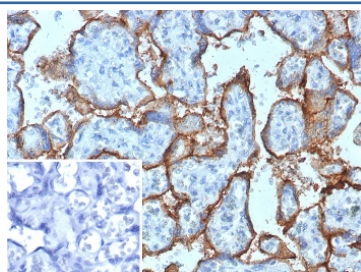


CD168 Antibody / HMMR [clone HMMR/8021] (V5112)

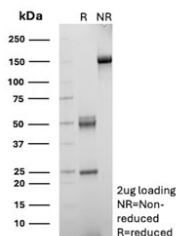
Catalog No.	Formulation	Size
V5112-100UG	0.2 mg/ml in 1X PBS with 0.1 mg/ml BSA (US sourced), 0.05% sodium azide	100 ug
V5112-20UG	0.2 mg/ml in 1X PBS with 0.1 mg/ml BSA (US sourced), 0.05% sodium azide	20 ug
V5112SAF-100UG	1 mg/ml in 1X PBS; BSA free, sodium azide free	100 ug

[Bulk quote request](#)

Availability	1-3 business days
Species Reactivity	Human
Format	Purified
Clonality	Monoclonal (mouse origin)
Isotype	Mouse IgG1, kappa
Clone Name	HMMR/8021
Purity	Protein A/G affinity
UniProt	O75330
Localization	Cell surface, Cytoplasm
Applications	Immunohistochemistry (FFPE) : 1-2ug/ml for 30 min at RT
Limitations	This CD168 antibody is available for research use only.



IHC staining of FFPE human placental tissue with CD168 / HMMR antibody (clone HMMR/8021). Inset: PBS used in place of primary Ab (secondary Ab negative control).
 HIER: boil tissue sections in pH 9 10mM Tris with 1mM EDTA for 20 min and allow to cool before testing.



SDS-PAGE analysis of purified, BSA-free CD168 antibody (clone HMMR/8021) as confirmation of integrity and purity.

Description

Hyaluronic acid (HA) is a nonsulfated glycosaminoglycan that regulates cell adhesion and migration. HA effects are mediated through two receptors, CD44 (also designated HCAM) and the receptor of hyaluronic acid mediated motility (RHAMM). RHAMM, also designated intracellular hyaluronic acid binding protein (IHABP) and CD168, is a matrix receptor, which is linked to the plasma membrane by a GPI anchor and regulates cell motility. RHAMM expression is upregulated in malignant lymphoid tissues and is subsequently implicated in tumor progression and metastasis formation, as well as signal transduction. Although still unclear, RHAMM is thought to exist as several isoforms ranging in size. A variant isoform, designated v4, is a protein that when over-expressed, is thought to be the cause of transformation and metastasis formation in fibroblasts.

Application Notes

Optimal dilution of the CD168 antibody should be determined by the researcher.

Immunogen

A recombinant partial protein sequence (within amino acids 1-250) from the human protein was used as the immunogen for the CD168 antibody.

Storage

Aliquot the CD168 antibody and store frozen at -20oC or colder. Avoid repeated freeze-thaw cycles.