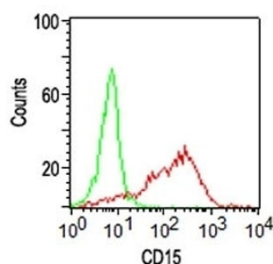


## CD15 Antibody / SSEA-1 [clone SPM119] (V7799)

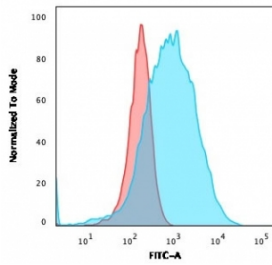
Catalog No.	Formulation	Size
V7799-100UG	0.2 mg/ml in 1X PBS with 0.1 mg/ml BSA (US sourced) and 0.05% sodium azide	100 ug
V7799-20UG	0.2 mg/ml in 1X PBS with 0.1 mg/ml BSA (US sourced) and 0.05% sodium azide	20 ug
V7799SAF-100UG	1 mg/ml in 1X PBS; BSA free, sodium azide free	100 ug

**Bulk quote request**

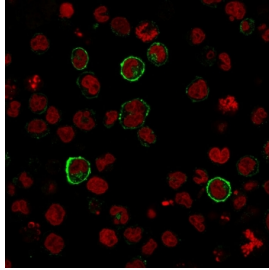
<b>Availability</b>	1-3 business days
<b>Species Reactivity</b>	Human
<b>Format</b>	Purified
<b>Clonality</b>	Monoclonal (mouse origin)
<b>Isotype</b>	Mouse IgM, kappa
<b>Clone Name</b>	SPM119
<b>Purity</b>	PEG precipitation
<b>UniProt</b>	P22083
<b>Applications</b>	Flow Cytometry : 1-2ug/million cells in 0.1ml Immunofluorescence : 1-2ug/ml Immunohistochemistry (FFPE) : 1-2ug/ml
<b>Limitations</b>	This CD15 antibody is available for research use only.



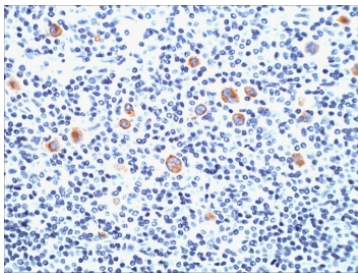
Flow cytometry testing of human monocytes with CD15 antibody (clone SPM119); Green=isotype control, Red= CD15 antibody.



Flow cytometry testing of human U937 cells with CD15 antibody (clone SPM119); Red=isotype control, Blue= CD15 antibody.



Immunofluorescent staining of human U937 cells with CD15 antibody (clone SPM119, green) and Reddot nuclear stain (red).



IHC staining of FFPE Hodgkins lymphoma with CD15 antibody (clone SPM119). HIER: boil tissue sections in pH 9 10mM Tris with 1mM EDTA for 10-20 min and allow to cool before testing.

## Description

CD15 plays a role in mediating phagocytosis, bactericidal activity, and chemotaxis. It is present on 95% of granulocytes including neutrophils and eosinophils and to a lesser degree on monocytes. In addition, CD15 is expressed in Reed-Sternberg cells and some epithelial cells. CD15 antibody is very useful in the identification of Hodgkin s disease. CD15 is occasionally expressed in large cell lymphomas of both B and T phenotypes which otherwise have a quite distinct histological appearance.

## Application Notes

Optimal dilution of the CD15 antibody should be determined by the researcher.

## Immunogen

Human U937 cells were used as the immunogen for the CD15 antibody.

## Storage

Store the CD15 antibody at 2-8oC (with azide) or aliquot and store at -20oC or colder (without azide).

