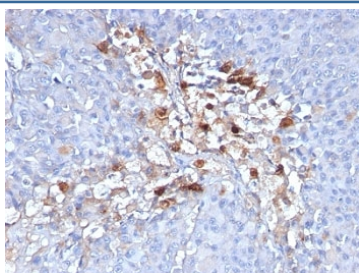


## CD146 Antibody [clone C146/634] (V2698)

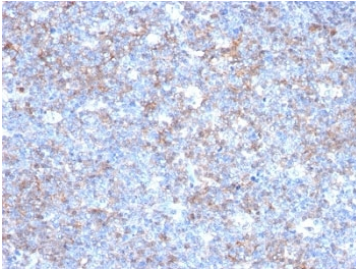
| Catalog No.    | Formulation   | Size   |
|----------------|---|--------|
| V2698-100UG    | 0.2 mg/ml in 1X PBS with 0.1 mg/ml BSA (US sourced) and 0.05% sodium azide                      | 100 ug |
| V2698-20UG     | 0.2 mg/ml in 1X PBS with 0.1 mg/ml BSA (US sourced) and 0.05% sodium azide                      | 20 ug  |
| V2698SAF-100UG | 1 mg/ml in 1X PBS; BSA free, sodium azide free  | 100 ug |
| V2698IHC-7ML   | Prediluted in 1X PBS with 0.1 mg/ml BSA (US sourced) and 0.05% sodium azide; *For IHC use only* | 7 ml   |

### Bulk quote request

|                           |  |
|---------------------------|--|
| <b>Availability</b>       | 1-3 business days  |
| <b>Species Reactivity</b> | Human  |
| <b>Format</b>             | Purified   |
| <b>Clonality</b>          | Monoclonal (mouse origin)  |
| <b>Isotype</b>            | Mouse IgG1, kappa  |
| <b>Clone Name</b>         | C146/634   |
| <b>Purity</b>             | Protein G affinity chromatography  |
| <b>UniProt</b>            | P43121   |
| <b>Localization</b>       | Cell surface, cytoplasm  |
| <b>Applications</b>       | Flow Cytometry : 0.5-1ug/10 <sup>6</sup> cells<br>Immunofluorescence : 0.5-1ug/ml<br>Immunohistochemistry (FFPE) : 0.5-1ug/ml for 30 min at RT |
| <b>Limitations</b>        | This CD146 antibody is available for research use only.  |



IHC: Formalin-fixed, paraffin-embedded human melanoma stained with CD146 antibody (clone C146/634).



IHC: Formalin-fixed, paraffin-embedded human tonsil stained with CD146 antibody (clone C146/634).

## Description

The human CD146 gene maps to chromosome 11q23 and encodes a trans-membrane glycoprotein, also designated MCAM, MUC 18, that belongs to the immunoglobulin superfamily and functions as a Ca<sup>2+</sup>-independent cell adhesion molecule. CD146 expression is restricted to advanced primary and metastatic melanomas and to cell lines of the neuroectodermal lineage, but not normal melanocytes. It is found on 80% of advanced primary human melanomas and correlates well with development of metastatic disease.

## Application Notes

Optimal dilution of the CD146 antibody should be determined by the researcher.

1. Staining of formalin-fixed tissues requires boiling tissue sections in 10mM Tris with 1mM EDTA, pH 9.0, for 10-20 min followed by cooling at RT for 20 minutes
2. The prediluted format is supplied in a dropper bottle and is optimized for use in IHC. After epitope retrieval step (if required), drip mAb solution onto the tissue section and incubate at RT for 30 min.

## Immunogen

Recombinant human protein was used as the immunogen for the CD146 antibody.

## Storage

Store the CD146 antibody at 2-8oC (with azide) or aliquot and store at -20oC or colder (without azide).