

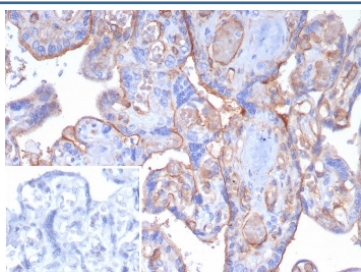
## CD141 Antibody / Thrombomodulin [clone THBD/8188R] (V4815)

Catalog No.	Formulation	Size
V4815-100UG	0.2 mg/ml in 1X PBS with 0.1 mg/ml BSA (US sourced), 0.05% sodium azide	100 ug
V4815-20UG	0.2 mg/ml in 1X PBS with 0.1 mg/ml BSA (US sourced), 0.05% sodium azide	20 ug
V4815SAF-100UG	1 mg/ml in 1X PBS; BSA free, sodium azide free	100 ug

Recombinant **RABBIT MONOCLONAL**

[Bulk quote request](#)

<b>Availability</b>	1-3 business days
<b>Species Reactivity</b>	Human
<b>Format</b>	Purified
<b>Clonality</b>	Recombinant Rabbit Monoclonal
<b>Isotype</b>	Rabbit IgG, kappa
<b>Clone Name</b>	THBD/8188R
<b>Purity</b>	Protein A/G affinity
<b>UniProt</b>	P07204
<b>Localization</b>	Cell Surface, Cytoplasm
<b>Applications</b>	Immunohistochemistry (FFPE) : 1-2ug/ml for 30 min at RT
<b>Limitations</b>	This CD141 antibody is available for research use only.



IHC staining of FFPE human placental tissue with CD141 antibody (clone THBD/8188R). Inset: PBS used in place of primary Ab (secondary Ab negative control). HIER: boil tissue sections in pH 9 10mM Tris with 1mM EDTA for 20 min and allow to cool before testing.

### Description

It recognizes a protein of 75kDa, identified as Thrombomodulin, or CD141. Thrombomodulin is a transmembrane glycoprotein with natural anticoagulant properties. It is normally expressed by a restricted number of cells, such as endothelial and mesothelial cells. In addition, synovial lining and syncytio-trophoblasts of placenta also express thrombomodulin. This protein is present in almost all of benign vascular tumors and majority of malignant vascular tumors

(Kaposi s sarcoma, angiosarcoma, and epithelioid hemangioendothelioma). Hence, anti-thrombomodulin serves as a sensitive marker for lymphatic endothelial cells and their tumors. Recently, thrombomodulin antibody has been used for mesothelial cells and malignant mesotheliomas.

## **Application Notes**

Optimal dilution of the CD141 antibody should be determined by the researcher.

## **Immunogen**

Recombinant full-length human protein was used as the immunogen for the CD141 antibody.

## **Storage**

Aliquot the CD141 antibody and store frozen at -20oC or colder. Avoid repeated freeze-thaw cycles.