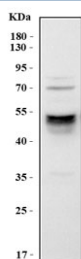


Cd14 Antibody (RQ8492)

| Catalog No. | Formulation | Size |
|-------------|---|--------|
| RQ8492 | 0.5mg/ml if reconstituted with 0.2ml sterile DI water | 100 ug |

Bulk quote request

| | |
|---------------------------|--|
| Availability | 1-3 days |
| Species Reactivity | Mouse |
| Format | Antigen affinity purified |
| Clonality | Polyclonal (rabbit origin) |
| Isotype | Rabbit IgG |
| Purity | Antigen affinity purified |
| Buffer | Lyophilized from 1X PBS with 2% Trehalose |
| UniProt | P10810 |
| Applications | Western Blot : 0.5-1ug/ml ELISA : 0.1-0.5ug/ml |
| Limitations | This Cd14 antibody is available for research use only. |



Western blot testing of mouse RAW264.7 cell lysate with Cd14 antibody. Predicted molecular weight: 40-55 kDa depending on glycosylation level.

Description

This gene encodes a protein that plays an important role in the innate immune response and is expressed in monocyte/macrophage cells. This gene product acts as a co-receptor that binds several microbial and fungal molecules, including lipopolysaccharides (LPS). This proteins LPS-binding activity is enhanced by the LPS binding protein (LBP) to allow binding to the TLR4-MD-2 co-receptor complex. The product of this gene is found in two forms, either as a soluble protein or attached to the cell surface by a glycosylphosphatidylinositol anchor.

Application Notes

Optimal dilution of the Cd14 antibody should be determined by the researcher.

Immunogen

An E.coli-derived mouse recombinant protein (amino acids D36-A260) was used as the immunogen for the Cd14 antibody.

Storage

After reconstitution, the Cd14 antibody can be stored for up to one month at 4oC. For long-term, aliquot and store at -20oC. Avoid repeated freezing and thawing.