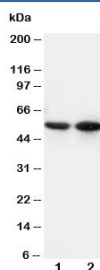


CD14 Antibody (R30515)

Catalog No.	Formulation	Size
R30515	0.5mg/ml if reconstituted with 0.2ml sterile DI water	100 ug

Bulk quote request

Availability	1-3 business days
Species Reactivity	Mouse
Format	Antigen affinity purified
Clonality	Polyclonal (rabbit origin)
Isotype	Rabbit IgG
Purity	Antigen affinity
Buffer	Lyophilized from 1X PBS with 2.5% BSA and 0.025% sodium azide/thimerosal
UniProt	P10810
Localization	Cell surface, Secreted, Cytoplasmic (Golgi)
Applications	Western Blot : 0.5-1ug/ml
Limitations	This CD14 antibody is available for research use only.



Western blot testing of CD14 antibody and Lane 1: mouse thymus; 2: mouse spleen tissue lysate

Description

CD14, Cluster of differentiation 14, single-copy gene encoding 2 protein forms: a 50- to 55-kD glycosylphosphatidylinositol-anchored membrane protein(mCD14) and a monocyte or liver-derived soluble serum protein(sCD14) that lacks the anchor. By in situ hybridization and study of somatic cell hybrid DNA that the gene is located at bands 5q23-q31. CD14 acts as a co-receptor(along with the Toll-like receptor TLR 4 and MD-2) for the detection of bacterial lipopolysaccharide(LPS). CD14 can bind LPS only in the presence of lipopolysaccharide-binding protein(LBP). Although LPS is considered its main ligand, CD14 also recognizes other pathogen-associated molecular patterns.

Application Notes

The stated application concentrations are suggested starting amounts. Titration of the CD14 antibody may be required due to differences in protocols and secondary/substrate sensitivity.

Immunogen

An amino acid sequence from the middle region of mouse CD14 (TRDAWLAELQQWLK) was used as the immunogen for this CD14 antibody.

Storage

After reconstitution, the CD14 antibody can be stored for up to one month at 4°C. For long-term, aliquot and store at -20°C. Avoid repeated freezing and thawing.