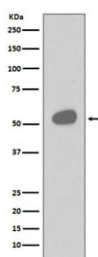


## CD14 Antibody [clone FID-3] (RQ5241)

Catalog No.	Formulation	Size
RQ5241	Antibody in PBS with 0.02% sodium azide, 50% glycerol and 0.4-0.5mg/ml BSA	100 ul

[Bulk quote request](#)

Availability	1-2 weeks
Species Reactivity	Human
Format	Purified
Clonality	Rabbit Monoclonal
Isotype	Rabbit IgG
Clone Name	FID-3
Purity	Affinity purified
UniProt	P08571
Applications	Western Blot : 1:500-1:2000
Limitations	This CD14 antibody is available for research use only.



Western blot testing of human tonsil lysate with CD14 antibody. Expected molecular weight 40-55 kDa depending on glycosylation level.

### Description

CD14 is expressed strongly on monocytes and macrophage and weakly on the surface of neutrophils. It is anchored to cells by linkage to glycosylphosphatidylinositol (GPI) and functions as a high affinity receptor for complexes of LPS and LPS binding protein (LBP).

### Application Notes

Optimal dilution of the CD14 antibody should be determined by the researcher.

### Immunogen

A synthetic peptide specific to human CD14 was used as the immunogen for the CD14 antibody.

## **Storage**

Store the CD14 antibody at -20oC.