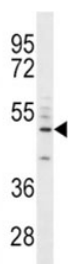


CD14 Antibody (F49569)

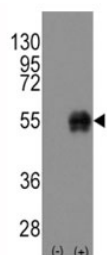
Catalog No.	Formulation	Size
F49569-0.4ML	In 1X PBS, pH 7.4, with 0.09% sodium azide	0.4 ml
F49569-0.08ML	In 1X PBS, pH 7.4, with 0.09% sodium azide	0.08 ml

[Bulk quote request](#)

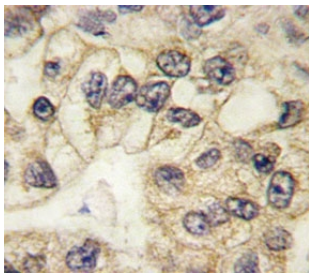
Availability	1-3 business days
Species Reactivity	Human
Format	Purified
Clonality	Polyclonal (rabbit origin)
Isotype	Rabbit Ig
Purity	Purified
UniProt	P08571
Localization	Cell surface, Secreted, Cytoplasmic (Golgi)
Applications	Western Blot : 1:1000 IHC (Paraffin) : 1:10-1:50 Flow Cytometry : 1:10-1:50
Limitations	This CD14 antibody is available for research use only.



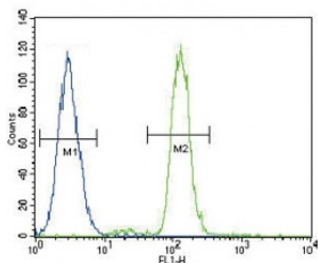
CD14 antibody western blot analysis in A549 lysate. Predicted size 40-55 kDa depending on glycosylation level



Western blot analysis of CD14 antibody and untransfected/transfected 293 cell lysate



CD14 antibody used to stain FFPE human lung carcinoma



CD14 antibody flow cytometric analysis of A549 cells (green) compared to a negative control (blue).

Description

In concert with LBP, CD14 binds to monomeric lipopolysaccharide and delivers it to the MD-2/TLR4 complex, thereby mediating the innate immune response to bacterial lipopolysaccharide (LPS). Acts via MyD88, TIRAP and TRAF6, leading to NF-kappa-B activation, cytokine secretion and the inflammatory response. Up-regulates cell surface molecules, including adhesion molecules. [UniProt]

Application Notes

The stated application concentrations are suggested starting amounts. Titration of the CD14 antibody may be required due to differences in protocols and secondary/substrate sensitivity.

Immunogen

A portion of amino acids 292-322 from the human protein was used as the immunogen for this CD14 antibody.

Storage

Store at 4oC for up to one month. For long term, aliquot the CD14 antibody and store frozen at -20oC or colder. Avoid repeated freeze-thaw cycles.