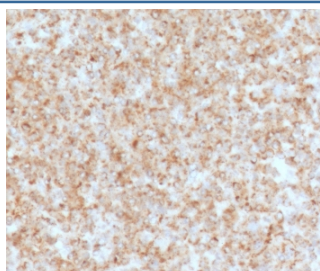


CD137 Antibody / 4-1BB / TNFRSF9 [clone CDLA137-1] (V7531)

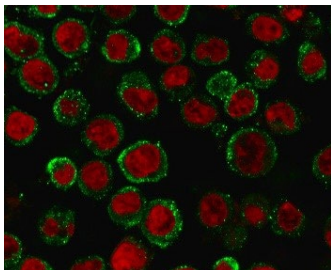
Catalog No.	Formulation	Size
V7531-100UG	0.2 mg/ml in 1X PBS with 0.1 mg/ml BSA (US sourced) and 0.05% sodium azide	100 ug
V7531-20UG	0.2 mg/ml in 1X PBS with 0.1 mg/ml BSA (US sourced) and 0.05% sodium azide	20 ug
V7531SAF-100UG	1 mg/ml in 1X PBS; BSA free, sodium azide free	100 ug
V7531IHC-7ML	Prediluted in 1X PBS with 0.1 mg/ml BSA (US sourced) and 0.05% sodium azide; *For IHC use only*	7 ml

[Bulk quote request](#)

Availability	1-3 business days
Species Reactivity	Human
Format	Purified
Clonality	Monoclonal (mouse origin)
Isotype	Mouse IgG1, kappa
Clone Name	CDLA137-1
Purity	Protein G affinity chromatography
UniProt	Q07011
Localization	Cell surface, cytoplasmic
Applications	Immunofluorescence : 1-2ug/ml Immunohistochemistry (FFPE) : 1-2ug/ml for 30 minutes at RT Prediluted IHC Only Format : incubate for 30 min at RT (1)
Limitations	This CD137 antibody is available for research use only.



IHC staining of FFPE human spleen with CD137 antibody (clone CDLA137-1). HIER: boil tissue sections in pH9 10mM Tris with 1mM EDTA for 10-20 min and allow to cool before testing.



Immunofluorescence staining of MeOH-fixed human HEK293 cells with CD137 antibody (green, clone CDLA137-1) and Reddot nuclear stain (red).

Description

CD137 belongs to the tumor necrosis factor receptor family and delivers a costimulatory signal to T lymphocytes. It is expressed on activated T cells and binds an inducible ligand that is found on B cells, macrophages and dendritic cells. Interactions between CD137 and its ligand are involved in antigen presentation and the generation of cytotoxic T cells. CD137 antibody may improve cancer treatment, and has been implicated in breast cancer, melanoma and lymphoma.

Application Notes

Optimal dilution of the CD137 antibody should be determined by the researcher.

1. The prediluted format is supplied in a dropper bottle and is optimized for use in IHC. After epitope retrieval step (if required), drip mAb solution onto the tissue section and incubate at RT for 30 min.

Immunogen

A recombinant human CD137 protein fragment within amino acids 19-188 was used as the immunogen for the CD137 antibody.

Storage

Store the CD137 antibody at 2-8°C (with azide) or aliquot and store at -20°C or colder (without azide).