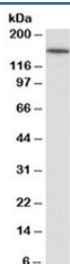


CD13 Antibody (R35348)

Catalog No.	Formulation	Size
R35348-100UG	0.5 mg/ml in 1X TBS, pH7.3, with 0.5% BSA (US sourced) and 0.02% sodium azide	100 ug

[Bulk quote request](#)

Availability	1-3 business days
Species Reactivity	Human
Format	Antigen affinity purified
Clonality	Polyclonal (goat origin)
Isotype	Goat Ig
Purity	Antigen affinity
Gene ID	290
Applications	Western Blot : 0.03-0.1ug/ml ELISA (peptide) LOD : 1:128000
Limitations	This CD13 antibody is available for research use only.



Western blot testing of human kidney lysate with CD13 antibody at 0.03ug/ml. Predicted molecular weight of ~110kDa but routinely observed at ~150kDa due to glycosylation.

Description

Additional name(s) for this target protein: Alanyl aminopeptidase; ANPEP

Application Notes

Optimal dilution of the CD13 antibody should be determined by the researcher.

Immunogen

Amino acids QLEQFKKDNEET were used as the immunogen for this CD13 antibody.

Storage

Aliquot and store the CD13 antibody at -20oC.