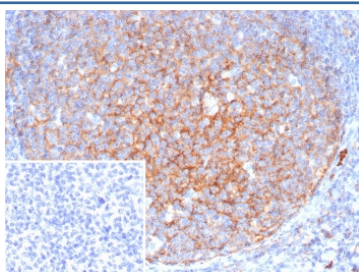


## CD11b Antibody / MAC-1 [clone ITGAM/4741] (V4403)

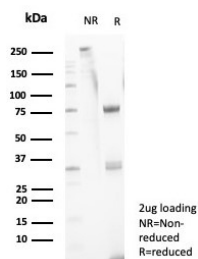
Catalog No.	Formulation	Size
V4403-100UG	0.2 mg/ml in 1X PBS with 0.1 mg/ml BSA (US sourced), 0.05% sodium azide	100 ug
V4403-20UG	0.2 mg/ml in 1X PBS with 0.1 mg/ml BSA (US sourced), 0.05% sodium azide	20 ug
V4403SAF-100UG	1 mg/ml in 1X PBS; BSA free, sodium azide free	100 ug

[Bulk quote request](#)

<b>Availability</b>	1-3 business days
<b>Species Reactivity</b>	Human
<b>Format</b>	Purified
<b>Clonality</b>	Monoclonal (mouse origin)
<b>Isotype</b>	Mouse IgG1, kappa
<b>Clone Name</b>	ITGAM/4741
<b>Purity</b>	Protein A/G affinity
<b>UniProt</b>	P11215
<b>Localization</b>	Cell Surface
<b>Applications</b>	Immunohistochemistry (FFPE) : 1-2ug/ml for 30 minutes at RT
<b>Limitations</b>	This CD11b antibody is available for research use only.



IHC staining of FFPE human spleen tissue with CD11b antibody (clone ITGAM/4741). Inset: PBS used in place of primary Ab (secondary Ab negative control). HIER: boil tissue sections in pH 9 10mM Tris with 1mM EDTA for 20 min and allow to cool before testing.



SDS-PAGE analysis of purified, BSA-free CD11b antibody (clone ITGAM/4741) as confirmation of integrity and purity.

## Description

CD11b is a cell adhesion molecule that acts as a receptor for cell surface ligands such as intracellular adhesion molecules (ICAMs) or soluble ligands. Integrins are heterodimeric proteins that contain an a chain and b chain.

## Application Notes

Optimal dilution of the CD11b antibody should be determined by the researcher.

## Immunogen

A recombinant partial protein sequence (within amino acids 900-1100) from the human protein was used as the immunogen for the CD11b antibody.

## Storage

Aliquot the CD11b antibody and store frozen at -20oC or colder. Avoid repeated freeze-thaw cycles.