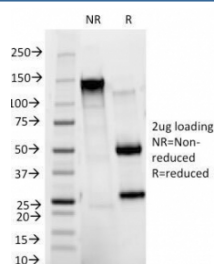


CD11b Antibody / MAC-1 / ITGAM [clone ITGAM/271] (V3528)

Catalog No.	Formulation	Size
V3528-100UG	0.2 mg/ml in 1X PBS with 0.1 mg/ml BSA (US sourced) and 0.05% sodium azide	100 ug
V3528-20UG	0.2 mg/ml in 1X PBS with 0.1 mg/ml BSA (US sourced) and 0.05% sodium azide	20 ug
V3528SAF-100UG	1 mg/ml in 1X PBS; BSA free, sodium azide free	100 ug

[Bulk quote request](#)

Species Reactivity	Human
Format	Purified
Clonality	Monoclonal (mouse origin)
Isotype	Mouse IgG1, kappa
Clone Name	ITGAM/271
Purity	Protein G affinity chromatography
Buffer	1X PBS, pH 7.4
Gene ID	3684
Localization	Cell surface, cytoplasm
Applications	Flow Cytometry : 1-2ug/10 ⁶ cells Immunofluorescence : 1-2ug/ml
Limitations	This CD11b antibody is available for research use only.



SDS-PAGE Analysis of Purified, BSA-Free CD11b Antibody (clone ITGAM/271).
Confirmation of Integrity and Purity of the Antibody.

Description

CD11b is a cell adhesion molecule that acts as a receptor for cell surface ligands such as intracellular adhesion

molecules (ICAMs) or soluble ligands. Integrins are heterodimeric proteins that contain an a chain and b chain. Integrin alpha-M (CD11b) combines with the Integrin beta-2 (CD18) to form a leukocyte-specific integrin referred to as macrophage receptor 1 (Mac-1), or inactivated-C3b (iC3b) receptor 3 (CR3). Integrin alpha-M/beta-2 is important in the adherence of neutrophils and monocytes to stimulated endothelium, and also in the phagocytosis of complement coated particles.

Application Notes

The concentration stated for each application is a general starting point. Variations in protocols, secondaries and substrates may require the CD11b antibody to be titrated up or down for optimal performance.

Immunogen

Recombinant human CD11b/ITGAM protein was used as the immunogen for this antibody.

Storage

Store the CD11b antibody at 2-8oC (with azide) or aliquot and store at -20oC or colder (without azide).

Alternate Names

Granulocyte marker

References (2)