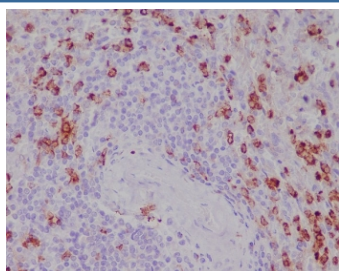


CD11b Antibody / MAC-1 / ITGAM [clone GC-9] (RQ5356)

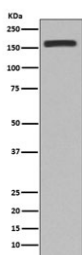
Catalog No.	Formulation	Size
RQ5356	Antibody in PBS with 0.02% sodium azide, 50% glycerol and 0.4-0.5mg/ml BSA	100 ul

[Bulk quote request](#)

Availability	1-2 weeks
Species Reactivity	Human, Mouse
Format	Purified
Clonality	Rabbit Monoclonal
Isotype	Rabbit IgG
Clone Name	GC-9
Purity	Affinity purified
UniProt	P11215
Applications	Western Blot : 1:500-1:2000 Immunohistochemistry (FFPE) : 1:50-1:200
Limitations	This CD11b antibody is available for research use only.



IHC staining of FFPE human spleen tissue with CD11b antibody. HIER: boil tissue sections in pH6, 10mM citrate buffer, for 10-20 min followed by cooling at RT for 20 min.



Western blot testing of mouse RAW264.7 cell lysate with CD11b antibody. Expected molecular weight: 127~170 kDa depending on glycosylation level.

Description

The ITGAM gene encodes the integrin alpha M chain, also called CD11b and MAC-1. Integrins are heterodimeric integral membrane proteins composed of an alpha chain and a beta chain. This I-domain containing alpha integrin combines with the beta 2 chain (ITGB2) to form a leukocyte-specific integrin referred to as macrophage receptor 1 ('Mac-1'), or inactivated-C3b (iC3b) receptor 3 ('CR3'). The alpha M beta 2 integrin is important in the adherence of neutrophils and monocytes to stimulated endothelium, and also in the phagocytosis of complement coated particles. Multiple transcript variants encoding different isoforms have been found for this gene. [RefSeq]

Application Notes

Optimal dilution of the CD11b antibody should be determined by the researcher.

Immunogen

A synthetic peptide specific to human CD11b / ITGAM was used as the immunogen for the CD11b antibody.

Storage

Store the CD11b antibody at -20oC.