

CD11a Antibody / LFA-1 [clone CRIS-3] (V2159)

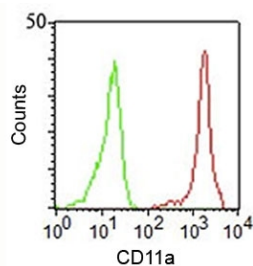
Catalog No.	Formulation	Size
V2159-100UG	0.2 mg/ml in 1X PBS with 0.1 mg/ml BSA (US sourced) and 0.05% sodium azide	100 ug
V2159-20UG	0.2 mg/ml in 1X PBS with 0.1 mg/ml BSA (US sourced) and 0.05% sodium azide	20 ug
V2159SAF-100UG	1 mg/ml in 1X PBS; BSA free, sodium azide free	100 ug



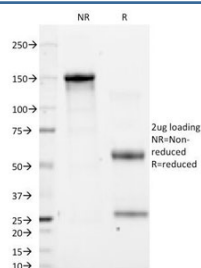
Citations (2)

[Bulk quote request](#)

Species Reactivity	Human
Format	Purified
Clonality	Monoclonal (mouse origin)
Isotype	Mouse IgG2b, kappa
Clone Name	CRIS-3
Purity	Protein G affinity chromatography
Buffer	1X PBS, pH 7.4
Gene ID	3683
Localization	Cell surface
Applications	Flow Cytometry : 1-2ug/10 ⁶ cells Immunofluorescence : 1-2ug/ml Functional studies (order BSA/sodium azide-free format)
Limitations	This CD11a antibody is available for research use only.



FACS staining of human PBMCs using CD11a antibody (CRIS-3).



SDS-PAGE Analysis of Purified, BSA-Free CD11a Antibody (clone CRIS-3).
Confirmation of Integrity and Purity of the Antibody.

Description

This antibody recognizes a protein of 180kDa, identified as CD11a. CD11a complexes with the beta 2 subunit of the integrin family, CD18, to form the cell surface heterodimer called LFA-1 or CD11a/CD18. LFA-1 is expressed on all leukocytes including lymphocytes, monocytes, and granulocytes. It is involved in leukocyte adhesion to its ligands including intercellular adhesion molecule-1 (ICAM-1 or CD54), ICAM-2 (CD102), ICAM-3 (CD50) and Telencephalin (TLN) and play a role in most immune/inflammatory responses.

Application Notes

The concentration stated for each application is a general starting point. Variations in protocols, secondaries and substrates may require the antibody to be titrated up or down for optimal performance.

Immunogen

Stimulated human leukocytes were used as the immunogen for this CD11b antibody.

Storage

Store the CD11a antibody at 2-8oC (with azide) or aliquot and store at -20oC or colder (without azide).

References (3)