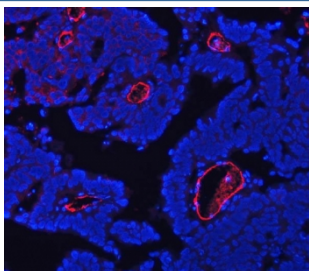


CD105 Antibody / Endoglin (RQ7690)

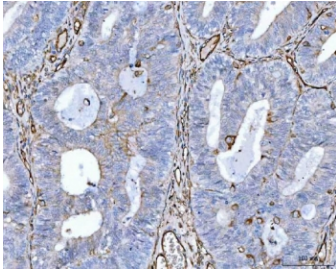
Catalog No.	Formulation	Size
RQ7690	0.5mg/ml if reconstituted with 0.2ml sterile DI water	100 ug

Bulk quote request

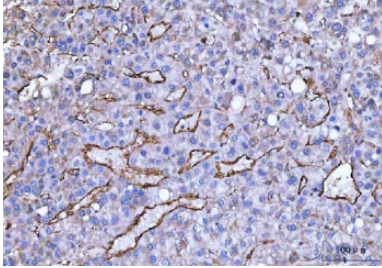
Availability	1-3 business days
Species Reactivity	Human
Format	Antigen affinity purified
Clonality	Polyclonal (rabbit origin)
Isotype	Rabbit IgG
Purity	Antigen affinity purified
Buffer	Lyophilized from 1X PBS with 2% Trehalose
UniProt	P17813
Localization	Cell surface
Applications	Western Blot : 0.5-1ug/ml Immunohistochemistry (FFPE) : 2-5ug/ml Immunofluorescence : 5ug/ml Flow Cytometry : 1-3ug/million cells Direct ELISA : 0.1-0.5ug/ml
Limitations	This CD105 antibody is available for research use only.



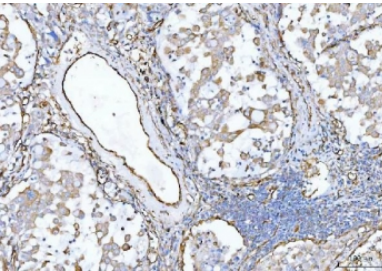
Immunofluorescent staining of FFPE human ovarian cancer tissue with CD105 antibody (red) and DAPI nuclear stain (blue). HIER: steam section in pH8 EDTA buffer for 20 min.



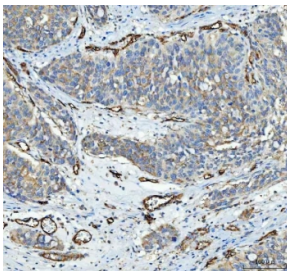
IHC staining of FFPE human endometrial adenocarcinoma tissue with CD105 antibody. HIER: boil tissue sections in pH8 EDTA for 20 min and allow to cool before testing.



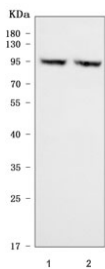
IHC staining of FFPE human liver cancer tissue with CD105 antibody. HIER: boil tissue sections in pH8 EDTA for 20 min and allow to cool before testing.



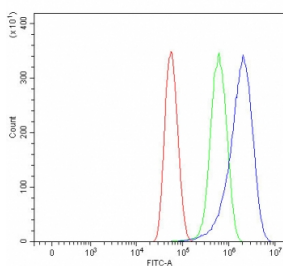
IHC staining of FFPE human lung cancer tissue with CD105 antibody. HIER: boil tissue sections in pH8 EDTA for 20 min and allow to cool before testing.



IHC staining of FFPE human bladder urothelial carcinoma tissue with CD105 antibody. HIER: boil tissue sections in pH8 EDTA for 20 min and allow to cool before testing.



Western blot testing of human 1) SiHa and 2) HeLa cell lysate with CD105 antibody. Observed molecular weight: 70/90 kDa (monomer, unmodified/glycosylated); 140-180 kDa (dimer, unmodified/glycosylated).



Flow cytometry testing of human U-87 MG cells with CD105 antibody at 1 ug/million cells (blocked with goat sera); Red=cells alone, Green=isotype control, Blue= CD105 antibody.

Description

Endoglin (Osler-Rendu-Weber syndrome 1), CD105, is a type I membrane glycoprotein located on cell surfaces and is a part of the TGF beta receptor complex. Its gene is mapped to human chromosome 8. The protein consists of a homodimer of 180 kDA with disulfide links. It has been found on endothelial cells, activated macrophages, fibroblasts and smooth muscle cells. Endoglin has a role in the development of the cardiovascular system and in vascular remodeling and has been found to be elevated in pregnant women who subsequently develop preeclampsia.

Application Notes

Optimal dilution of the CD105 antibody should be determined by the researcher.

Immunogen

E. coli-derived recombinant human protein (amino acids E26-H267) was used as the immunogen for the CD105 antibody.

Storage

After reconstitution, the CD105 antibody can be stored for up to one month at 4°C. For long-term, aliquot and store at -20°C. Avoid repeated freezing and thawing.