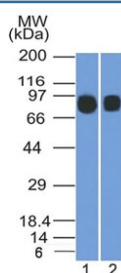


CD10 Antibody / Neprilysin [clone MME/1892] (V3878)

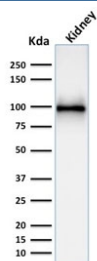
Catalog No.	Formulation	Size
V3878-100UG	0.2 mg/ml in 1X PBS with 0.1 mg/ml BSA (US sourced) and 0.05% sodium azide	100 ug
V3878-20UG	0.2 mg/ml in 1X PBS with 0.1 mg/ml BSA (US sourced) and 0.05% sodium azide	20 ug
V3878SAF-100UG	1 mg/ml in 1X PBS; BSA free, sodium azide free	100 ug

[Bulk quote request](#)

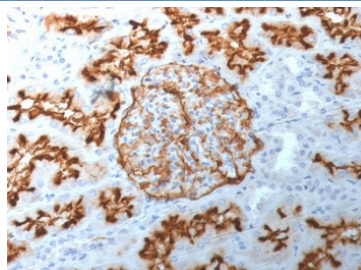
Availability	1-3 business days
Species Reactivity	Human
Format	Purified
Clonality	Monoclonal (mouse origin)
Isotype	Mouse IgG2c, kappa
Clone Name	MME/1892
Purity	Protein G affinity chromatography
UniProt	P08473
Localization	Cell surface, Cytoplasmic
Applications	ELISA : 2-4ug/ml (order BSA/azide-free format) Western Blot : 1-2ug/ml Immunohistochemistry (FFPE) : 1-2ug/ml for 30 min at RT
Limitations	This CD10 antibody is available for research use only.



Western blot testing of human 1) Raji and 2) Ramos cell lysate with CD10 antibody (clone MME/1892). Routinely visualized at ~100 kDa.



Western blot testing of human kidney lysate with CD10 antibody (clone MME/1892). Routinely visualized at ~100 kDa.

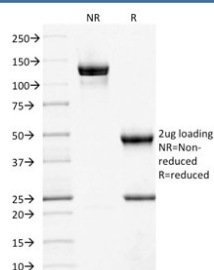


IHC staining of FFPE human kidney with CD10 antibody (clone MME/1892). Required HEIR: boil tissue sections in 10mM Tris with 1mM EDTA, pH 9, for 10-20 min and allow to cool before testing.

Human Protein Microarray Specificity Validation



Analysis of HuProt(TM) microarray containing more than 19,000 full-length human proteins using CD10 antibody (clone MME/1892). These results demonstrate the foremost specificity of the MME/1892 mAb.
Z- and S- score: The Z-score represents the strength of a signal that an antibody (in combination with a fluorescently-tagged anti-IgG secondary Ab) produces when binding to a particular protein on the HuProt(TM) array. Z-scores are described in units of standard deviations (SD's) above the mean value of all signals generated on that array. If the targets on the HuProt(TM) are arranged in descending order of the Z-score, the S-score is the difference (also in units of SD's) between the Z-scores. The S-score therefore represents the relative target specificity of an Ab to its intended target.



SDS-PAGE analysis of purified, BSA-free CD10 antibody (clone MME/1892) as confirmation of integrity and purity.

Description

CD10, also known as Common Acute Lymphocytic Leukemia Antigen (CALLA) and Neprilysin, is a cell surface enzyme with neutral metalloendopeptidase activity, which inactivates a variety of biologically active peptides. CD10 is expressed on the cells of lymphoblastic, Burkitt's, and follicular germinal center lymphomas, and on cells from patients with chronic myelocytic leukemia (CML). It is also expressed on the surface of normal early lymphoid progenitor cells, immature B cells within adult bone marrow and germinal center B cells within lymphoid tissue. CD10 is also present on breast myoepithelial cells, bile canaliculi, fibroblasts, with especially high expression on the brush border of kidney and gut epithelial cells.

Application Notes

Optimal dilution of the CD10 antibody should be determined by the researcher.

Immunogen

A portion of amino acids 297-483 from the human protein was used as the immunogen for the CD10 antibody.

Storage

Store the CD10 antibody at 2-8oC (with azide) or aliquot and store at -20oC or colder (without azide).