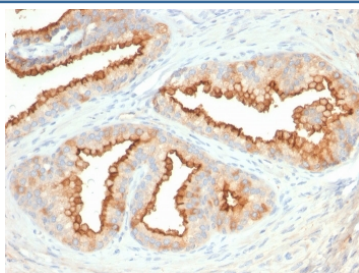


CD10 Antibody [clone MME/2579] (V7954)

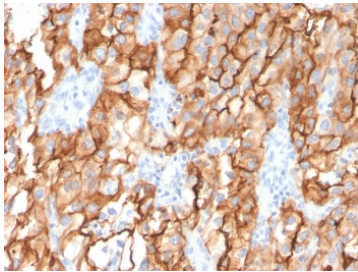
Catalog No.	Formulation	Size
V7954-100UG	0.2 mg/ml in 1X PBS with 0.1 mg/ml BSA (US sourced) and 0.05% sodium azide	100 ug
V7954-20UG	0.2 mg/ml in 1X PBS with 0.1 mg/ml BSA (US sourced) and 0.05% sodium azide	20 ug
V7954SAF-100UG	1 mg/ml in 1X PBS; BSA free, sodium azide free	100 ug

Bulk quote request

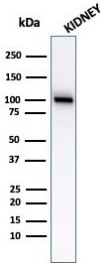
Availability	1-3 business days
Species Reactivity	Human
Format	Purified
Clonality	Monoclonal (mouse origin)
Isotype	Mouse IgG1, kappa
Clone Name	MME/2579
Purity	Protein G affinity chromatography
UniProt	P08473
Localization	Cell surface, cytoplasmic
Applications	Immunohistochemistry (FFPE) : 1-2ug/ml Western Blot : 1-2ug/ml
Limitations	This CD10 antibody is available for research use only.



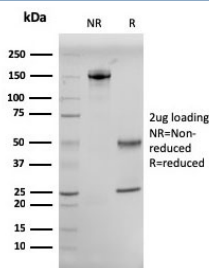
IHC staining of FFPE human prostate carcinoma with CD10 antibody (clone MME/2579).
HIER: boil tissue sections in pH 9 10mM Tris with 1mM EDTA for 20 min and allow to cool before testing.



IHC staining of FFPE human renal cell carcinoma with CD10 antibody (clone MME/2579). HIER: boil tissue sections in pH 9 10mM Tris with 1mM EDTA for 20 min and allow to cool before testing.



Western blot testing of human kidney lysate with CD10 antibody (clone MME/2579). Routinely visualized at ~100 kDa.



SDS-PAGE analysis of purified, BSA-free CD10 antibody (clone MME/2579) as confirmation of integrity and purity.

Description

Recognizes a 100kDa glycoprotein, identified as CD10, also known as Common Acute Lymphocytic Leukemia Antigen (CALLA). It is a cell surface enzyme with neutral metalloendopeptidase activity, which inactivates a variety of biologically active peptides. CD10 is expressed on the cells of lymphoblastic, Burkitt's, and follicular germinal center lymphomas, and on cells from patients with chronic myelocytic leukemia (CML). It is also expressed on the surface of normal early lymphoid progenitor cells, immature B cells within adult bone marrow and germinal center B cells within lymphoid tissue. CD10 is also present on breast myoepithelial cells, bile canaliculi, fibroblasts, with especially high expression on the brush border of kidney and gut epithelial cells.

Application Notes

Optimal dilution of the CD10 antibody should be determined by the researcher.

Immunogen

A recombinant human partial protein (amino acids 583-740) was used as the immunogen for the CD10 antibody.

Storage

Store the CD10 antibody at 2-8°C (with azide) or aliquot and store at -20°C or colder (without azide).

