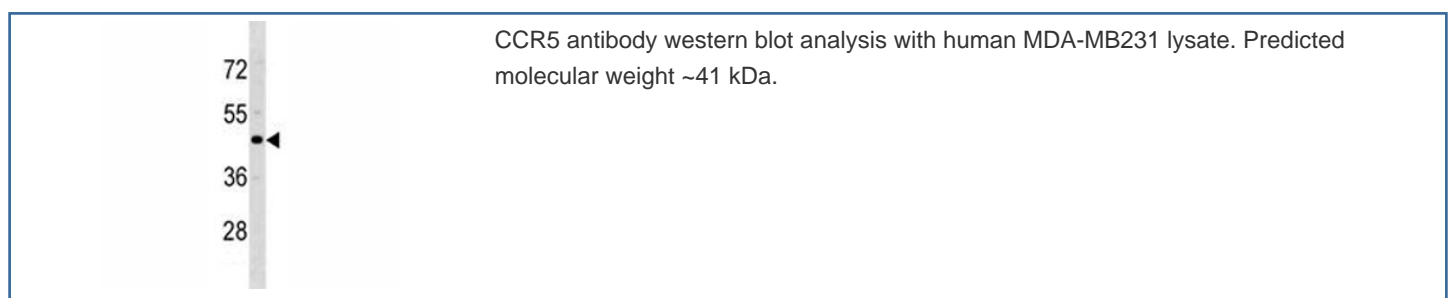


## CCR5 Antibody (F47455)

Catalog No.	Formulation	Size
F47455-0.4ML	In 1X PBS, pH 7.4, with 0.09% sodium azide	0.4 ml
F47455-0.08ML	In 1X PBS, pH 7.4, with 0.09% sodium azide	0.08 ml

[Bulk quote request](#)

<b>Availability</b>	1-3 business days
<b>Species Reactivity</b>	Human
<b>Format</b>	Antigen affinity purified
<b>Clonality</b>	Polyclonal (rabbit origin)
<b>Isotype</b>	Rabbit Ig
<b>Purity</b>	Antigen affinity
<b>UniProt</b>	P51681
<b>Applications</b>	Western Blot : 1:1000
<b>Limitations</b>	This CCR5 antibody is available for research use only.



## Description

This gene encodes a member of the beta chemokine receptor family, which is predicted to be a seven transmembrane protein similar to G protein-coupled receptors. This protein is expressed by T cells and macrophages, and is known to be an important co-receptor for macrophage-tropic virus, including HIV, to enter host cells. Defective alleles of this gene have been associated with the HIV infection resistance. The ligands of this receptor include monocyte chemoattractant protein 2 (MCP-2), macrophage inflammatory protein 1 alpha (MIP-1 alpha), macrophage inflammatory protein 1 beta (MIP-1 beta) and regulated on activation normal T expressed and secreted protein (RANTES). Expression of this gene was also detected in a promyeloblastic cell line, suggesting that this protein may play a role in granulocyte lineage proliferation and differentiation. This gene is located at the chemokine receptor gene cluster region. Two transcript

variants encoding the same protein have been found for this gene.

## **Application Notes**

Titration of the CCR5 antibody may be required due to differences in protocols and secondary/substrate sensitivity.

## **Immunogen**

A portion of amino acids 151-177 from the human protein was used as the immunogen for this CCR5 antibody.

## **Storage**

Aliquot the CCR5 antibody and store frozen at -20oC or colder. Avoid repeated freeze-thaw cycles.