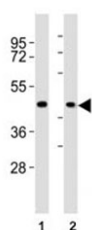


## CCR1 Antibody (F53335)

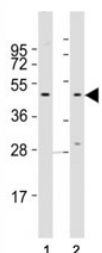
Catalog No.	Formulation	Size
F53335-0.4ML	In 1X PBS, pH 7.4, with 0.09% sodium azide	0.4 ml
F53335-0.08ML	In 1X PBS, pH 7.4, with 0.09% sodium azide	0.08 ml

[Bulk quote request](#)

<b>Availability</b>	1-3 business days
<b>Species Reactivity</b>	Human
<b>Format</b>	Antigen affinity purified
<b>Clonality</b>	Polyclonal (rabbit origin)
<b>Isotype</b>	Rabbit Ig
<b>Purity</b>	Antigen affinity
<b>UniProt</b>	P32246
<b>Localization</b>	Cytoplasmic, membranous
<b>Applications</b>	Western Blot : 1:1000-2000
<b>Limitations</b>	This CCR1 antibody is available for research use only.



Western blot testing of CCR1 antibody at 1:2000 dilution. Lane 1: A375 lysate; 2: human skeletal muscle lysate; Predicted molecular weight: 40-45 kDa.



Western blot testing of CCR1 antibody at 1:2000 dilution. Lane 1: A375 lysate; 2: Jurkat lysate; Predicted molecular weight: 40-45 kDa.

## Description

Receptor for a C-C type chemokine. Binds to MIP-1-alpha, MIP-1-delta, RANTES, and MCP-3 and, less efficiently, to MIP-1-beta or MCP-1 and subsequently transduces a signal by increasing the intracellular calcium ions level. Responsible for affecting stem cell proliferation.

## Application Notes

Titration of the CCR1 antibody may be required due to differences in protocols and secondary/substrate sensitivity.

## Immunogen

This CCR1 antibody was produced from a rabbit immunized with a KLH conjugated synthetic peptide between 13-44 amino acids from the N-terminal region of human CCR1.

## Storage

Aliquot the CCR1 antibody and store frozen at -20oC or colder. Avoid repeated freeze-thaw cycles.