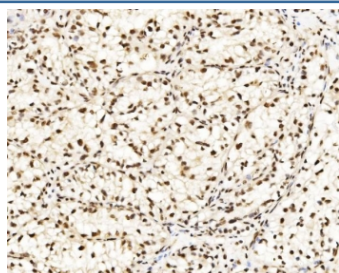


CCAR2 Antibody / DBC1 (RQ6544)

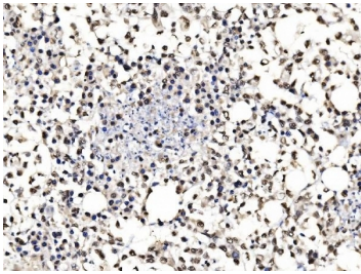
Catalog No.	Formulation	Size
RQ6544	0.5mg/ml if reconstituted with 0.2ml sterile DI water	100 ug

Bulk quote request

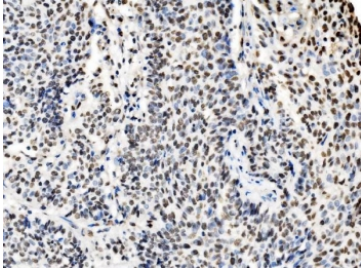
Availability	1-3 business days
Species Reactivity	Human, Mouse, Rat, Monkey
Format	Antigen affinity purified
Clonality	Polyclonal (rabbit origin)
Isotype	Rabbit IgG
Purity	Affinity purified
Buffer	Lyophilized from 1X PBS with 2% Trehalose
UniProt	Q8N163
Localization	Cytoplasmic, nuclear
Applications	Western Blot : 1-2ug/ml Immunohistochemistry (FFPE) : 2-5ug/ml Immunofluorescence : 5ug/ml Flow Cytometry : 1-3ug/million cells Direct ELISA : 0.1-0.5ug/ml
Limitations	This CCAR2 antibody is available for research use only.



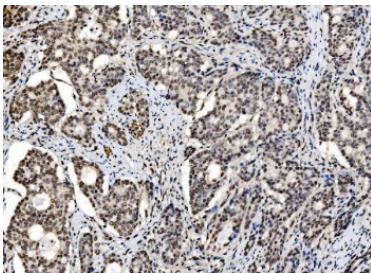
IHC staining of FFPE human renal clear cell carcinoma tissue with CCAR2 antibody.
HIER: boil tissue sections in pH8 EDTA for 20 min and allow to cool before testing.



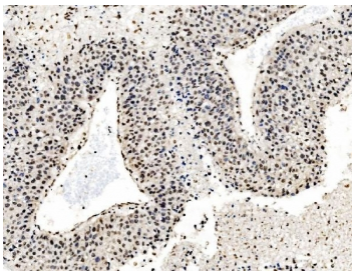
IHC staining of FFPE human pancreatic carcinoma tissue with CCAR2 antibody. HIER: boil tissue sections in pH8 EDTA for 20 min and allow to cool before testing.



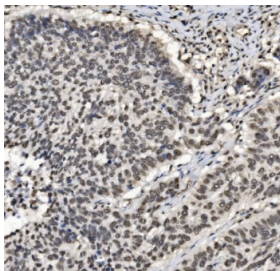
IHC staining of FFPE human lung cancer tissue with CCAR2 antibody. HIER: boil tissue sections in pH8 EDTA for 20 min and allow to cool before testing.



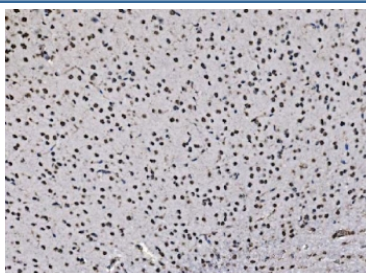
IHC staining of FFPE human gall bladder adenosquamous carcinoma tissue with CCAR2 antibody. HIER: boil tissue sections in pH8 EDTA for 20 min and allow to cool before testing.



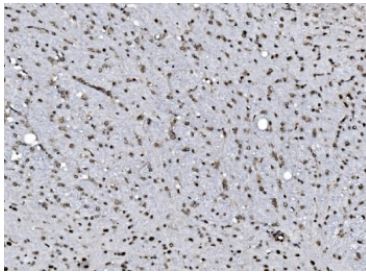
IHC staining of FFPE human liver cancer tissue with CCAR2 antibody. HIER: boil tissue sections in pH8 EDTA for 20 min and allow to cool before testing.



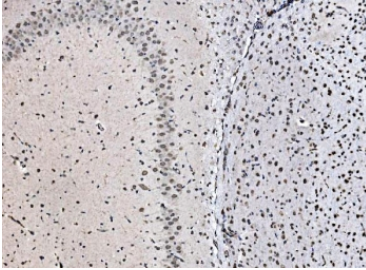
IHC staining of FFPE human laryngeal carcinoma tissue with CCAR2 antibody. HIER: boil tissue sections in pH8 EDTA for 20 min and allow to cool before testing.



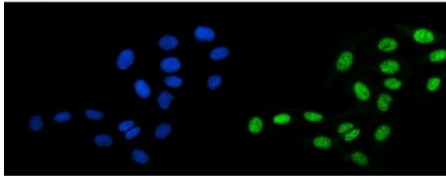
IHC staining of FFPE mouse brain tissue with CCAR2 antibody. HIER: boil tissue sections in pH8 EDTA for 20 min and allow to cool before testing.



IHC staining of FFPE rat brain tissue with CCAR2 antibody. HIER: boil tissue sections in pH8 EDTA for 20 min and allow to cool before testing.



IHC staining of FFPE rat brain tissue with CCAR2 antibody. HIER: boil tissue sections in pH8 EDTA for 20 min and allow to cool before testing.



Immunofluorescent staining of FFPE human U-2 OS cells with CCAR2 antibody (green) and DAPI nuclear stain (blue). HIER: steam section in pH6 citrate buffer for 20 min.

Description

Deleted in bladder cancer protein 1 is a protein that in humans is encoded by the DBC1 gene. Cell cycle and apoptosis regulator protein 2 (CCAR2), previously known as DBC1/KIAA1967, regulates diverse cellular functions including transcription, mRNA splicing, metabolism, and circadian cycle. CCAR2 is a critical regulator of cell death or survival following cellular stresses. CCAR2 is a widely expressed protein involved in the regulation of a variety of transcriptional complexes. High expression of CCAR2 correlates with poor outcomes in many human tumor types such as squamous cell carcinoma (SCC).

Application Notes

Optimal dilution of the CCAR2 antibody should be determined by the researcher.

Immunogen

An E. coli-derived human protein (amino acids L65-E917) was used as the immunogen for the CCAR2 antibody.

Storage

After reconstitution, the CCAR2 antibody can be stored for up to one month at 4oC. For long-term, aliquot and store at -20oC. Avoid repeated freezing and thawing.

