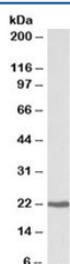


## CBFB Antibody / Core-binding factor subunit beta (R33715)

Catalog No.	Formulation	Size
R33715-100UG	0.5 mg/ml in 1X TBS, pH7.3, with 0.5% BSA (US sourced) and 0.02% sodium azide	100 ug

[Bulk quote request](#)

Availability	1-3 business days
Species Reactivity	Human
Predicted Reactivity	Mouse, Dog
Format	Antigen affinity purified
Clonality	Polyclonal (goat origin)
Isotype	Goat Ig
Purity	Antigen affinity
Gene ID	865
Applications	Western Blot : 0.3-1ug/ml ELISA (peptide) LOD : 1:2000
Limitations	This CBFB antibody is available for research use only.



Western blot testing of human Daudi lysate with CBFB antibody at 0.3ug/ml. Predicted molecular weight: ~22 kDa.

### Description

Additional name(s) for this target protein: Core-binding factor, beta subunit

### Application Notes

Optimal dilution of the CBFB antibody should be determined by the researcher.

### Immunogen

Amino acids EARRQQDPSPGSN were used as the immunogen for this CBFB antibody.

## Storage

Aliquot and store the CBFB antibody at -20oC.