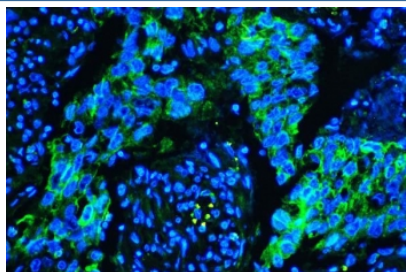


Caveolin-1 Antibody [clone 12C7] (RQ4919)

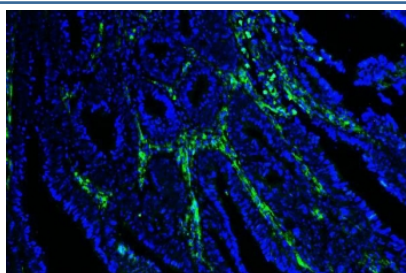
Catalog No.	Formulation	Size
RQ4919	0.5mg/ml if reconstituted with 0.2ml sterile DI water	100 ug

Bulk quote request

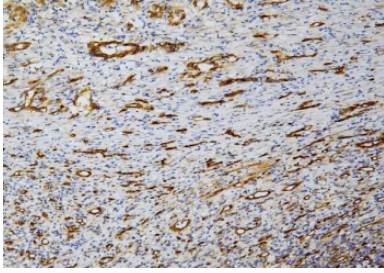
Availability	1-3 business days
Species Reactivity	Human
Format	Purified
Clonality	Monoclonal (mouse origin)
Isotype	Mouse IgG2a
Clone Name	12C7
Purity	Purified
Buffer	Lyophilized from 1X PBS with 2% Trehalose and 0.025% sodium azide
UniProt	Q03135
Applications	Western Blot : 0.5-1ug/ml Immunohistochemistry (FFPE) : 1-2ug/ml Immunofluorescence : 2-4ug/ml
Limitations	This Caveolin-1 antibody is available for research use only.



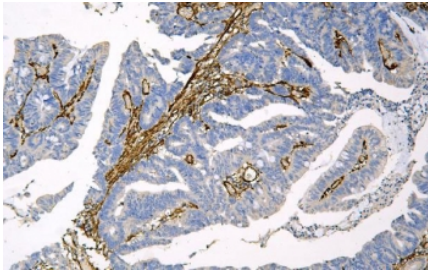
Immunofluorescent staining of FFPE human lung cancer tissue with Caveolin-1 antibody (green) and DAPI nuclear stain (blue). HIER: steam section in pH6 citrate buffer for 20 min.



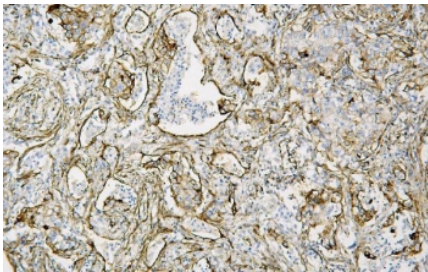
Immunofluorescent staining of FFPE human colorectal cancer tissue with Caveolin-1 antibody (green) and DAPI nuclear stain (blue). HIER: steam section in pH6 citrate buffer for 20 min.



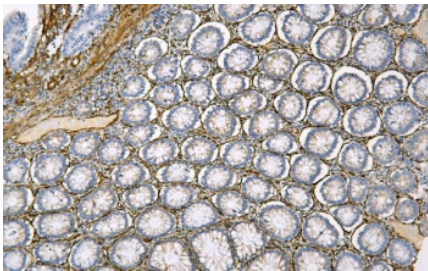
IHC staining of FFPE human melanoma with Caveolin-1 antibody. HIER: boil tissue sections in pH8 EDTA for 20 min and allow to cool before testing.



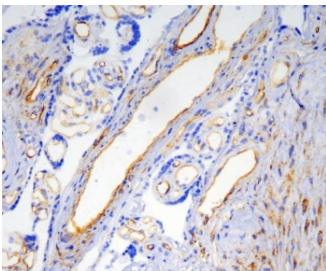
IHC staining of FFPE human intestinal cancer with Caveolin-1 antibody. HIER: boil tissue sections in pH8 EDTA for 20 min and allow to cool before testing.



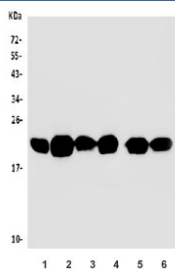
IHC staining of FFPE human lung cancer with Caveolin-1 antibody. HIER: boil tissue sections in pH8 EDTA for 20 min and allow to cool before testing.



IHC staining of FFPE human intestinal cancer with Caveolin-1 antibody. HIER: boil tissue sections in pH8 EDTA for 20 min and allow to cool before testing.



IHC staining of frozen human placenta with Caveolin-1 antibody.



Western blot testing of human 1) HeLa, 2) A549, 3) placenta, 4) U-87 MG, 5) PC-3 and 6) U-2 OS lysate with Calveolin-1 antibody. Predicted molecular weight ~21 kDa.

Description

CAV1(Caveolin-1) is a protein that in humans is encoded by the CAV1 gene. The CAV1 gene is mapped to 7q31.2. The scaffolding protein encoded by this gene is the main component of the caveolae plasma membranes found in most cell types. The protein links integrin subunits to the tyrosine kinase FYN, an initiating step in coupling integrins to the Ras-ERK pathway and promoting cell cycle progression. The gene is a tumor suppressor gene candidate and a negative regulator of the Ras-p42/44 MAP kinase cascade. CAV1 and CAV2 are located next to each other on chromosome 7 and express colocalizing proteins that form a stable hetero-oligomeric complex. By using alternative initiation codons in the same reading frame, two isoforms(alpha and beta) are encoded by a single transcript from this gene.

Application Notes

Optimal dilution of the Caveolin-1 antibody should be determined by the researcher.

Immunogen

Amino acids G4-I178 from the human protein were used as the immunogen for the Caveolin-1 antibody.

Storage

After reconstitution, the Caveolin-1 antibody can be stored for up to one month at 4oC. For long-term, aliquot and store at -20oC. Avoid repeated freezing and thawing.