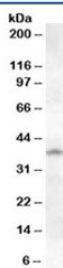


Cathepsin K Antibody (R34667)

Catalog No.	Formulation	Size
R34667-100UG	0.5 mg/ml in 1X TBS, pH7.3, with 0.5% BSA (US sourced) and 0.02% sodium azide	100 ug

[Bulk quote request](#)

Availability	1-3 business days
Species Reactivity	Human
Predicted Reactivity	Cow, Dog, Mouse, Pig, Rat
Format	Antigen affinity purified
Clonality	Polyclonal (goat origin)
Isotype	Goat Ig
Purity	Antigen affinity
Gene ID	1513
Applications	Western Blot : 1-3ug/ml ELISA (peptide) LOD : 1:16000
Limitations	This Cathepsin K antibody is available for research use only.



Western blot testing of human lung lysate with Cathepsin K antibody at 1ug/ml. Predicted molecular weight ~37 kDa, with an ~46 kDa pro form and an ~27 kDa mature form.

Description

Additional name(s) for this target protein: CTSK, CTS02, CTSO, CTSO1, CTSO2; CTSK

Application Notes

Optimal dilution of the Cathepsin K antibody should be determined by the researcher.

Immunogen

Amino acids KTHRKQYNNKVDE were used as the immunogen for this Cathepsin K antibody.

Storage

Aliquot and store the Cathepsin K antibody at -20oC.