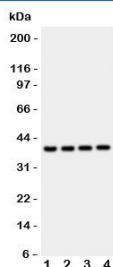


Cathepsin D Antibody / CTSD (R31479)

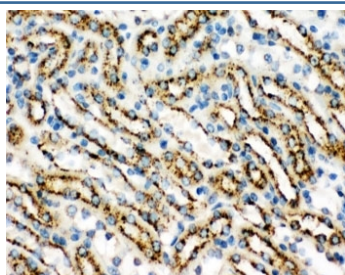
Catalog No.	Formulation	Size
R31479	0.5mg/ml if reconstituted with 0.2ml sterile DI water	100 ug

Bulk quote request

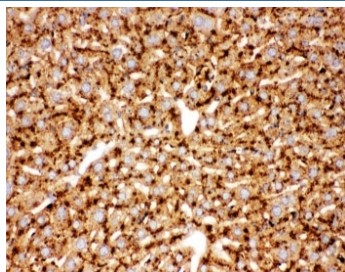
Availability	1-3 business days
Species Reactivity	Mouse, Rat
Format	Antigen affinity purified
Clonality	Polyclonal (rabbit origin)
Isotype	Rabbit IgG
Purity	Antigen affinity
Buffer	Lyophilized from 1X PBS with 2.5% BSA and 0.025% sodium azide
Gene ID	13033
Localization	Cytoplasmic
Applications	Western Blot : 0.5-1ug/ml IHC (FFPE) : 0.5-1ug/ml
Limitations	This Cathepsin D antibody is available for research use only.



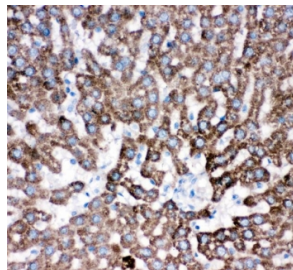
Western blot testing of Cathepsin D antibody and mouse samples: 1: liver; 2: brain; 3: thymus; 4: Neuro-2a lysate. Expected molecular weight: 43-46 kDa, 28 kDa (heavy chain), 15 kDa (light chain).



IHC-P: Cathepsin D antibody testing of mouse kidney tissue



IHC-P: Cathepsin D antibody testing of mouse liver tissue



IHC-P: Cathepsin D antibody testing of rat liver tissue. HIER: steam section in pH6 citrate buffer for 20 min.

Description

Cathepsin D is a protein that in humans is encoded by the CTSD gene. This proteinase is a member of the peptidase C1 family, having a specificity similar to but narrower than that of pepsin A. It is mapped to 11p15.5. The cDNA encodes a 412-amino acid protein with 20 and 44 amino acids in a pre- and prosegment, respectively. Cathepsin D is one of the lysosomal proteinases. It is ubiquitously expressed and is involved in proteolytic degradation, cell invasion, and apoptosis. Mutations in this gene are involved in the pathogenesis of several diseases, including breast cancer and possibly Alzheimer disease and it has been considered as a breast cancer tumor marker.

Application Notes

The stated application concentrations are suggested starting amounts. Titration of the Cathepsin D antibody may be required due to differences in protocols and secondary/substrate sensitivity.

Immunogen

Mouse partial recombinant protein (AA 65-410) was used as the immunogen for this Cathepsin D antibody.

Storage

After reconstitution, the Cathepsin D antibody can be stored for up to one month at 4°C. For long-term, aliquot and store at -20°C. Avoid repeated freezing and thawing.