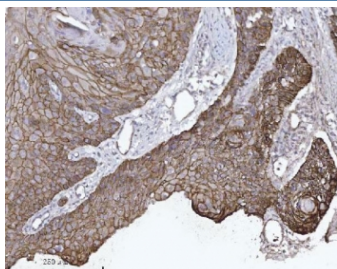


Catenin delta 1 Antibody / CTNND1 / p120 Catenin [clone 8G7E4] (RQ7127)

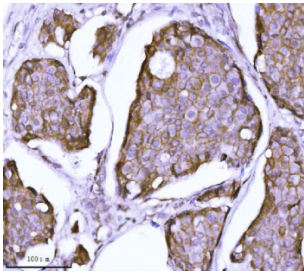
| Catalog No. | Formulation | Size |
|-------------|---|--------|
| RQ7127 | 0.5mg/ml if reconstituted with 0.2ml sterile DI water | 100 ug |

Bulk quote request

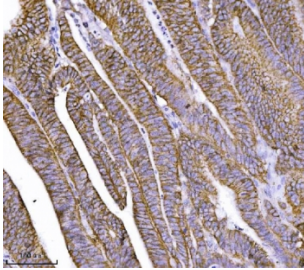
| | |
|---------------------------|--|
| Availability | 1-3 business days |
| Species Reactivity | Human, Mouse, Rat |
| Format | Antigen affinity purified |
| Clonality | Monoclonal (mouse origin) |
| Isotype | Mouse IgG2b |
| Clone Name | 8G7E4 |
| Purity | Antigen affinity purified |
| Buffer | Lyophilized from 1X PBS with 2% Trehalose |
| UniProt | O60716 |
| Localization | Cell Surface, Cytoplasm |
| Applications | Western Blot : 0.5-1ug/ml Immunohistochemistry (FFPE) : 2-5ug/ml Immunofluorescence : 5ug/ml |
| Limitations | This Catenin delta 1 antibody is available for research use only. |



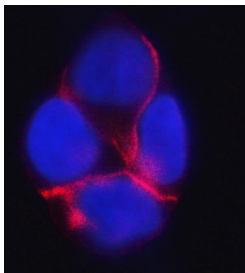
IHC staining of FFPE human laryngeal squamous cell carcinoma tissue with Catenin delta 1 antibody. HIER: boil tissue sections in pH8 EDTA for 20 min and allow to cool before testing.



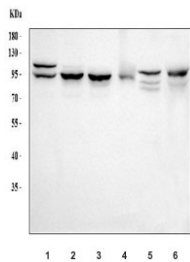
IHC staining of FFPE human breast cancer tissue with Catenin delta 1 antibody. HIER: boil tissue sections in pH8 EDTA for 20 min and allow to cool before testing.



IHC staining of FFPE human colorectal adenocarcinoma tissue with Catenin delta 1 antibody. HIER: boil tissue sections in pH8 EDTA for 20 min and allow to cool before testing.



Immunofluorescent staining of FFPE human RT4 cells with Catenin delta 1 antibody (red) and DAPI nuclear stain (blue). HIER: steam section in pH6 citrate buffer for 20 min.



Western blot testing of 1) human A549, 2) human HaCaT, 3) human RT4, 4) human T-47D, 5) rat PC-12 and 6) rat C6 cell lysate with Catenin delta 1 antibody. Predicted molecular weight of ~108 kDa but commonly observed at 66-120 kDa (multiple isoforms).

Description

Catenin delta-1 is a protein that in humans is encoded by the CTNND1 gene. This gene encodes a member of the Armadillo protein family, which function in adhesion between cells and signal transduction. Multiple translation initiation codons and alternative splicing result in many different isoforms being translated. Not all of the full-length natures of the described transcript variants have been determined. Read-through transcription also exists between this gene and the neighboring upstream thioredoxin-related transmembrane protein 2 (TMX2) gene.

Application Notes

Optimal dilution of the Catenin delta 1 antibody should be determined by the researcher.

Immunogen

Recombinant human protein (amino acids H64-K930) was used as the immunogen for the Catenin delta 1 antibody.

Storage

After reconstitution, the Catenin delta 1 antibody can be stored for up to one month at 4°C. For long-term, aliquot and store at -20°C. Avoid repeated freezing and thawing.

