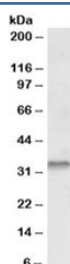


Caspase 6 Antibody (R35479)

| Catalog No. | Formulation | Size |
|--------------|---|--------|
| R35479-100UG | 0.5 mg/ml in 1X TBS, pH7.3, with 0.5% BSA (US sourced) and 0.02% sodium azide | 100 ug |

[Bulk quote request](#)

| | |
|--------------------|---|
| Availability | 1-3 business days |
| Species Reactivity | Human |
| Format | Antigen affinity purified |
| Clonality | Polyclonal (goat origin) |
| Isotype | Goat Ig |
| Purity | Antigen affinity |
| Gene ID | 839 |
| Applications | Western Blot : 0.3-1ug/ml ELISA (peptide) LOD : 1:128000 |
| Limitations | This Caspase 6 antibody is available for research use only. |



Western blot testing of human colon lysate with Caspase 6 antibody at 0.3ug/ml.
Predicted molecular weight: ~33 kDa (precursor).

Description

Additional name(s) for this target protein: CASP6, Apoptotic protease MCH-2

Application Notes

Optimal dilution of the Caspase 6 antibody should be determined by the researcher.

Immunogen

Amino acids QTEKLDTNITEVD were used as the immunogen for this Caspase 6 antibody.

Storage

Aliquot and store the Caspase 6 antibody at -20oC.